

# ENSYSTEX™

LEADING INNOVATION IN PEST MANAGEMENT



# WORLD CLASS INNOVATION AND PRODUCT DISCOVERY

PRODUCT INFORMATION  
2019/20



## ABOUT ENSYSTEX

Ensystem is a global, research-based company focused on providing **environmentally responsible, effective, urban pest management solutions** and has achieved a high international reputation for these products.

Our commitment to the pest management industry is displayed through the team of dedicated professionals employed in Australia. Ensystem now has the largest technical sales support team of any innovation based company in Australia. We are here to assist you should problems ever arise. Ensystem has specialists in all States of Australia, and you also have the support of our Australian laboratory complex for soil testing, chemical analysis, etc.

Ensystem develops and owns all its own formulations, performs QA and batch analysis checks on all batches of chemicals and guarantees the consistent quality of all materials sold. Ensystem is a true specialist in professional pest management for the urban and public health environment.

## YOU CALL - WE JUMP

We're all aware that working in today's tough, demanding, fast forward environment, when a problem comes up, it can make life very difficult. That's why Ensystem has a strong "help" line, dedicated to our valued clients.

If you have any technical questions or require technical support all you have to do is call **13 35 36** and follow any prompts. We then guarantee that one of our technical support specialists will call you back within 2 hours of your call being placed to assist with the matter.

**This support is available 24 hours a day, 365 days a year!**

## YOUR ENSYSTEX GUARANTEE

If any Ensystem product fails to meet or exceed your expectations, return the unused portion in the container, at our expense, and we will issue you with a full refund. If you have a challenging situation, Ensystem guarantees to assist you with the matter and, where required, send one of our trained technical support specialists to visit the site with you.

Ensystem always uses the highest quality materials to ensure optimal efficacy and safety. SDS to international standards are available for all Ensystem products and, where relevant, AQIS Approval Certificates for product use in Export Meat Production Facilities are also available.

## ENSYSTEX FORMULATIONS

Ensystem is a world leader in bait technologies and the development of aqueous (water-based) suspension concentrates. Ensystem guarantees all formulations are of a class-leading standard.

### Unique Micro-fine Suspensions

With suspension concentrates particle size is critically important. If the particles are too large the product will leave unsightly residues, if too small they will sink into porous surfaces. For this reason Ensystem uses a custom-built, highly refined vertical milling process to ensure a micro-fine particle size. These micro-fine particles are then more easily picked up by the insects, yet they will remain on porous surfaces to give you improved residual performance on even the most difficult surfaces such as concrete. Moreover, the microfine particles will enter the insect's spiracles more readily which leads to faster kill and a more effective product.

Ensystem then uses a sophisticated suspension system to suspend the particles in the water-based formulation and protect it from degradation and microbial / fungal attack. This ensures that the actives remain suspended in your spray tank, so whenever you spray you are placing the optimal amount of active onto your treated surface. (Of course you should always agitate your spray mix prior to commencing a treatment program.) All water-based products also employ Ensystem's unique Microbial Protection Blend™. All water-based products are subject to microbial infection once they have been opened, or after resting in your spray tank. This can lead to strong odours, mould growth and poor performance. To help combat this, all reputable manufacturers include a biocide in their formulation to protect against gram-positive bacteria. Since these biocides are expensive, the cut-price formulators leave them out, leaving you with potential problems. At Ensystem we offer an even higher level of protection since our Microbial Protection Blend™ uniquely provides protection against both gram-positive and gram-negative bacteria, thus ensuring the highest quality product at all times.

And all Ensystem products come with a written Quality Performance and Support Guarantee, your contractual agreement from Ensystem that we will be there to support you - ALWAYS!

## YOUR ON TIME DELIVERY GUARANTEE...

### ENSYSTEX MAKES THIS COMMITMENT TO YOU:

If you place your order before 2.00pm AEST\*, your order will leave the same day. If you place your order after 2.00pm AEST, your order will leave the next day. Ensystem delivers your products, door to door, using Australia's leading courier services to optimise prompt receipt of goods.

(\*) 12.00pm for pallet orders.

[www.ensystem.com.au/aerother.html](http://www.ensystem.com.au/aerother.html)

# AEROTHOR™

## EXTRA STRENGTH CRAWLING INSECT SPRAY

Extra strength, super fast kill aerosol spray.



## AEROTHOR KEY FEATURES

- ✓ **Superfast knockdown of cockroaches;** Quite Simply, nothing is faster than AEROTHOR in terms of speed of performance for flushing and killing cockroaches. In fact AEROTHOR will knockdown cockroaches in just a few seconds!
- ✓ **Extra Strength;** To give you the performance you expect as a professional pest manager.
- ✓ **Two Way Nozzle;** This specialised aerosol nozzle allows you to spray through the nozzle for a powerful blast covering a larger area; or alternatively, flip the targeted straw application nozzle into place for accurate treatment into cracks and crevices.
- ✓ **Labelled for the control of Crawling Insects;** So you can use it against all common pest species.
- ✓ **Two Pyrethroid Actives;** AEROTHOR contains two actives. Imiprothrin provides super-fast knockdown and kill of crawling pests while the cypermethrin provides long-lasting residual performance.
- ✓ **Will not harm plants;** Safe to use around plants or garden areas.
- ✓ **Low toxic;** So you can use AEROTHOR in schools, kitchens, hospitals, domestic residences, offices, etc.

## AEROTHOR PRODUCT DETAILS

<b>Active Ingredients:</b>	2 g/kg cypermethrin, 1.4 g/kg imiprothrin
<b>Insecticide Group:</b>	Pyrethroid
<b>Formulation Type:</b>	Aerosol
<b>Pests Controlled:</b>	Crawling insects including bed bugs, cockroaches, silverfish, ants, carpet beetles, fleas, spiders, millipedes and clothes moths
<b>Pack Size/ Code:</b>	350 g can (CHEAX1001) 12 x 350 g cans (CHEAX1000)
<b>Resistance Group:</b>	3A

## HOW TO USE

Shake can well before using. Keep can as upright as possible and hold about 15-20 cm from the surface. Avoid using on plastic surfaces. Treating surface with AEROTHOR Extra Strength Crawling Insect Spray will kill and protect against a large range of crawling insects. For direct kill spray in the direction of the crawling insect.



# ATTRATHOR™

## TARGETED INSECTICIDE

Attractive Betrayal: A world first LIQUID BAIT with advanced micro-encapsulated attractant combined with micro-encapsulated fipronil, the active you know and trust.



### ATTRATHOR KEY FEATURES

- ✔ **Quick-release Insect Attractant Micro-capsules™;** Tiny, 2 µm, solid-core capsules which contain the cockroach food attractant in a matrix within a polymer shell. These tiny Micro-capsules have a large surface area relative to their volume, which allows for the quick-release of the attractant. The attractant diffuses out through the polymer shell, quickly luring the cockroaches to the ATTRATHOR Target Zone™.
- ✔ **Controlled-release Active Micro-capsules™;** Larger, 35 – 55 µm, liquid-core capsules contain the active fipronil. These capsules have a finer polymer shell and, trapped within the liquid fipronil core, are tiny bubbles of CO<sub>2</sub>. These pressurise the capsules, ensuring that when the insect makes contact with them, the capsules burst open, releasing the deadly fipronil within. These Micro-capsules control the release of the fipronil to ensure maximum residual performance. The larger size also ensures improved performance on porous surfaces.
- ✔ **Quick Elimination;** Within 48 hours, there will be a significant reduction in pest numbers.
- ✔ **Attractive Betrayal;** Insects are lured to the ATTRATHOR Target Zone™ by the Quick-release Insect Attractant Micro-capsules™ where they unknowingly pick up the deadly Controlled-release Active Micro-capsules.
- ✔ **Easy Application;** Through traditional spray equipment targeted into cockroach harbourages. ATTRATHOR can partner, or replace gel bait technology.
- ✔ **Kills More Cockroaches;** Cockroaches passing over the film pick-up the Active Micro-capsules, loaded with fipronil. When they later socialise, they unknowingly pass the toxicant on. This creates the Viral Transfer Effect™ leading to the kill of more cockroaches.

### ATTRATHOR PRODUCT DETAILS

**Active Ingredient:** 26 g/L fipronil  
**Insecticide Group:** Phenylpyrazole  
**Formulation Type:** ATTRACT & KILL - Liquid bait  
**Pests Controlled:** Cockroaches and ants  
**Pack Size/ Code:** 250 mL (CHEAT1009), 500 mL (CHEAT1001)  
**Resistance Group:** 2B

### PERFORMANCE

ATTRATHOR is unique since it provides both active and passive control of cockroaches. ACTIVE CONTROL is achieved when the Quick-release Insect Attractant Micro-capsules™ lure the cockroaches to the ATTRATHOR Target Zone™ where they break the Controlled-release Active Micro-capsules™ containing the deadly fipronil. Due to fipronil's non-repellent chemistry, with its presence further concealed by the polymer coating of the Micro-capsules, the cockroaches remain totally unaware of the presence of the fipronil. Death occurs through either Contact Action - as the fipronil passes into the cockroach through the cuticle; Stomach Action - as the cockroach grooms itself and breaks or removes the Active Micro-capsules laced with fipronil; or through the Viral Transfer Effect™ - where the cockroaches pass the Active Micro-capsules onto other cockroaches. PASSIVE CONTROL is achieved through the effects of the liquid film forming a residual defence zone. ATTRATHOR is applied as a targeted surface spray into cockroach harbourages and areas where cockroaches frequent. Here it works like any other residual surface spray, except there is a very big benefit because ATTRATHOR is powered by fipronil's non-repellent insecticidal chemistry. The cockroaches cannot detect the presence of the fipronil, so they readily cross the treated target zone. Plus the micro-encapsulation protects the fipronil, slowly releasing it over time; providing up to three months of passive control.

# BITHOR®

## DUAL ACTION INSECTICIDE

The Silent Assassins! Two actives, two different modes of action combine into the unstoppable insecticide.



### BITHOR DUAL ACTION KEY FEATURES

- ✔ **Two Actives;** Each with a totally different mode of attack combine into one unstoppable insecticide that is stronger than its individual components.
- ✔ **Non Repellent;** Bifenthrin is combined with the non-repellent imidacloprid, to create a combination product that is effectively non-repellent.
- ✔ **Blended Active Concentrate (BAC) Technology;** The two actives are milled and blended together so they meld into one to disguise their presence.
- ✔ **Long Term;** Residual action is provided through the intensified effects of two well known and trusted actives.
- ✔ **Power From Synergy;** By combining two actives from two totally different chemical groups we create a unique product that kills the toughest pests. The two actives combine together to create a synergistic effect with each actively intensifying the effects of the other, to create a more potent solution than either alone.
- ✔ **Two Different Modes of Action;** Imidacloprid is a neonicotinoid insecticide that acts as a synaptic toxin. It mimics the actions of the naturally occurring neurotransmitter, acetylcholine. In contrast, bifenthrin is a pyrethroid insecticide that acts as an axonic toxin affecting the sodium : potassium gate.

### BITHOR DUAL ACTION PRODUCT DETAILS

**Active Ingredients:** 45 g/L bifenthrin, 55 g/L imidacloprid  
**Insecticide Group:** Bifenthrin (pyrethroid), imidacloprid (neonicotinoid)  
**Formulation Type:** Odourless, waterbased micro-suspension concentrate  
**Pests Controlled:** Bed bugs, spiders, ants, cockroaches, mosquitoes, fleas, flies, biting midges & paper nest wasps  
**Pack Size/ Code:** 1L (CHMB1007), 3L (CHMB1008)  
**Resistance Group:** 3A 4A

### PERFORMANCE

BITHOR DUAL ACTION blends two actives, bifenthrin and imidacloprid, together to form a micro-suspension concentrate, where the particle size is optimised to penetrate the insect cuticle more readily, whilst providing improved residual performance on a wide range of surfaces and under a wide range of weather conditions.



# BLATTATHOR® GEL COCKROACH BAIT

The CLEAR Solution for Cockroach Baiting. Advanced gel technology. Highly palatable, highly active and no resistance worries.



## BLATTATHOR KEY FEATURES

- ✔ **A unique, clear coloured gel;** Other cockroach gels are either brown or white in colour, so they are unsightly in modern kitchens and homes. The unique clear gel of BLATTATHOR ensures the utmost discretion for your clients.
- ✔ **Dual mode of action means no resistance;** In addition to working as a strong killing agent with a unique mode of action, it also works as an insect growth regulator, upsetting nymphal growth, sexual maturity and egg laying. Quite simply this means that whilst with other, lesser cockroach baits you are advised to regularly change your bait due to resistance concerns, this is not necessary with BLATTATHOR.
- ✔ **Viral Feed Through Effect;** BLATTATHOR works by attracting cockroaches to feed on the gel. Once they have fed on the gel they return to their harbourage where the natural insect toxin then kills the cockroaches. They die and then infect other cockroaches. This 'viral' effect gives you optimal results.
- ✔ **Stop feed action;** Whilst detailed studies have shown that cockroaches prefer BLATTATHOR to other food sources, they do not overfeed because BLATTATHOR triggers feeding inhibition. So, once the cockroach has consumed a lethal dose, it stops feeding and you do not waste any bait. This means bait placements last longer since, once a cockroach has eaten a lethal dose, it stops feeding altogether. This ensures there is more bait available for other cockroaches to feed upon to better ensure the success of your treatment in even the most difficult of situations.
- ✔ **A natural insect toxin;** Abamectin is nature's solution to pest control problems. A natural insect toxin derived from fungus, BLATTATHOR can be used in the most sensitive of accounts, plus it is used at a very low rate.
- ✔ **Universal Design;** Syringes fit all standard cockroach bait guns. Recommended for use with the ACCUTHOR GEL GUN.

## BLATTATHOR PRODUCT DETAILS

- Active Ingredient:** 0.5 g/kg abamectin
- Insecticide Group:** Abamectin is a natural fermentation product of the soil bacterium *Streptomyces avermectinius*
- Formulation Type:** Unique translucent cockroach gel
- Pests Controlled:** Cockroaches
- Pack Size/ Code:** 4 x 30 g tubes (CHEBG1000)

## PERFORMANCE

Baits need to be applied close to where the cockroaches are already feeding and harbouring. Therefore, the first step in cockroach management must be a thorough inspection to find where the cockroaches are hiding and feeding. The more thorough you are at this stage the more likely you are to be successful in placing baits in the correct areas and avoiding a recall. BLATTATHOR only needs to be replaced when it is eaten or removed by cleaning.

## DIRECTIONS FOR USE

Commercial, Industrial and Residential Buildings for the control of German and American cockroaches. Apply as a 3 mm to 6 mm diameter bait spot. Use the larger bait spot for American cockroaches. Apply 12-24 bait spots for a 30 m<sup>2</sup> treatment area for heavy infestations and 4-6 bait spots for a 30 m<sup>2</sup> treatment area for light infestations. For Routine/Maintenance Treatments Ensysstex recommends the use of BLATTATHOR Gel Cockroach Bait with abamectin to protect against resistance. With its Multimode Activity BLATTATHOR Gel is a true Resistance Fighter.

# BLATTATHOR® ULTRA SUPERSONIC COCKROACH GEL BAIT

A gel bait formulated with FIPRONIL, the active you know and trust!

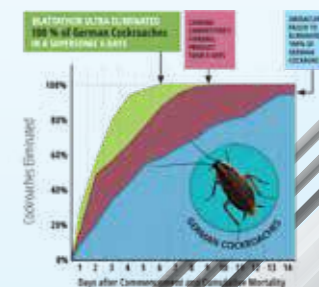


## BLATTATHOR ULTRA KEY FEATURES

- ✔ **Highly palatable mix of attractants, nutrients and feeding stimulants;** A clear winner with its ULTRA FAST kill and elimination of pest cockroaches, even nymphs - which means greater customer satisfaction and fewer call-backs!
- ✔ **Supersonic knockdown;** The Viral Feed Through Effect™ ensures supersonic knockdown of cockroaches, and with its high moisture retention, it keeps on killing.
- ✔ **Highly palatable;** It is unique blend of several highly palatable cockroach foods and proprietary feeding attractants combine to ensure that cockroaches readily feed, giving you great results.
- ✔ **Professional strength;** Fuelled by fipronil at 0.5 g/kg BLATTATHOR ULTRA ensures cockroaches start to vanish quickly, meaning greater customer satisfaction and fewer call-backs.

## BLATTATHOR ULTRA PRODUCT DETAILS

- Active Ingredient:** Professional strength 0.5 g/kg fipronil
- Insecticide Group:** Fipronil is a broad spectrum phenylpyrazole insecticide
- Formulation Type:** Translucent cockroach gel
- Pests Controlled:** Cockroaches
- Pack Size/ Code:** 4 x 30 g tubes (CHEBG1002)
- Resistance Group:** 2B



## PERFORMANCE

Place BLATTATHOR ULTRA bait as close as possible to cockroach harbourages. Place bait spots into cracks and crevices away from where they are likely to be removed by cleaning.

## DIRECTIONS FOR USE

For German and American cockroaches in commercial, industrial and residential buildings. Apply as a 2 mm to 4 mm diameter bait spot. Use the larger bait spot for American cockroaches. Apply 12-24 bait spots for a 30 m<sup>2</sup> treatment area for heavy infestations and 4-6 bait spots for a 30 m<sup>2</sup> treatment area for light infestations.





# CULITHOR™

## GRANULAR MOSQUITO GROWTH REGULATOR

**CULITHOR** uniquely uses our *Intelligent Granular Micro-encapsulation Technology™* to provide controlled, long-term release of the active ingredient, an insect growth regulator for the prevention of adult mosquito emergence.

### CULITHOR KEY BENEFITS

- ✔ **Water Release;** CULITHOR remains stable even in strong sunlight allowing use in tidal areas and on flood plains. It is only triggered into action when immersed in water.  
**TRIGGER 1 – Water release.**
- ✔ **Targeted;** The low pH in the gut of the mosquito larvae triggers the release of the active ingredient from the *pH Regulated Controlled-release Active Microcapsules™*.  
**TRIGGER 2 – Mosquito Gut Release.**
- ✔ **Long-term residual;** The Double Trigger Release mechanism can provide for control over several months.
- ✔ **Controlled Release;** The CULITHOR *Intelligent Granules™* slowly release the *pH Regulated Controlled-release Active Microcapsules™* which gradually rise to the surface.
- ✔ **Good distribution in the water;** The CULITHOR *Intelligent Granules™* with *pR-CRAM™* microcapsules ensure a good distribution of the active through the water body.
- ✔ **High Active Loading;** CULITHOR has three times more (S)-methoprene compared to any other granular product on the market. This means you use 1/3 as much per hectare. Meaning lower application and transport costs.
- ✔ **Easy Application;** CULITHOR can be applied with conventional ground or aerial application equipment. The high mass core of the CULITHOR *Intelligent Granules™* ensures targeted delivery, even in adverse weather conditions.
- ✔ **Controls all Mosquito Larvae;** CULITHOR prevents the emergence of adult mosquitoes, including common *Aedes*, *Anopheles*, *Culex* and *Ochlerotatus* spp. from treated sites. It works on both bottom feeding and surface feeding species.
- ✔ **Improved Safety;** The outer shell of the *pH Regulated Controlled-release Active Microcapsules™* is non-digestible by mammals.

### CULITHOR PRODUCT DETAILS

<b>Active Ingredient:</b>	12 g/kg (S)-methoprene
<b>Insecticide Group:</b>	Biopesticide – Insect growth regulator
<b>Formulation Type:</b>	Ready-to-use <i>Intelligent Granular Micro-encapsulation Technology</i>
<b>Pests Controlled:</b>	Prevents the emergence of adult mosquitoes
<b>Pack Size/ Code:</b>	500 g (CHECL1000), 1 kg (CHECL1001), 5 kg (CHECL1002), 20 kg (CHECL1003)
<b>Resistance Group:</b>	7A

### PRODUCT PERFORMANCE

CULITHOR can be used in freshwater swamps and marshes, salt and freshwater lagoons, salt marshes, mangrove swamps, estuarine areas, woodland pools, or any natural water-holding features; in both open water situations or where water is obscured by vegetation. In fact anywhere where mosquito breeding is a problem.

CULITHOR works by mimicking the presence of natural juvenile hormone in the mosquito larvae. Consequently CULITHOR prevents the emergence of adult mosquitoes, including common *Aedes*, *Anopheles*, *Culex* and *Ochlerotatus* spp. from treated sites. Treated larvae continue to develop normally to the pupal stage after which they fail to emerge. CULITHOR has sufficient activity to be effective against existing broods when applied to any larval stage at recommended rates. Third and fourth larval instars are more susceptible to the effects of (S)-methoprene than early stage instars.



# CYPERTHOR®

## INSECTICIDE

The high performance, quality insecticide that combines the powerful residual action of an alternative pyrethroid active.

### CYPERTHOR KEY BENEFITS

- ✔ **Withstands degradation by sunlight, heat & once dry is unaffected by rain;** To give you a better result and fewer call-backs.
- ✔ **Highest quality micro-fine suspension formulation;** This ensures CYPERTHOR stays in suspension in your tank longer to give you optimal results. More importantly it ensures the particles of alpha-cypermethrin penetrate the insect cuticle more effectively resulting in faster control.
- ✔ **High quality water-based suspension concentrate;** To give you improved residual performance, odourless and no visible residues.
- ✔ **No hydrocarbon solvents;** Which means no worries about staining, no odour and no damage to your equipment, seals or pumps.
- ✔ **Approved for use indoors and outdoors, in food handling premises, hospitals, etc;** To give you maximum flexibility in your use of CYPERTHOR.
- ✔ **Rapidly metabolised in plants and mammals;** Making it safe to use in even the most sensitive environments.

### CYPERTHOR PRODUCT DETAILS

<b>Active Ingredient:</b>	50 g/L alpha-cypermethrin
<b>Insecticide Group:</b>	Pyrethroid
<b>Formulation Type:</b>	Microfine suspension concentrate
<b>Pests Controlled:</b>	Cockroaches, spiders, ants, flies, fleas, silverfish
<b>Pack Size/ Code:</b>	5 L (CHECY1000)
<b>Resistance Group:</b>	3A

### PERFORMANCE

CYPERTHOR contains alpha-cypermethrin which offers you an alternative pyrethroid formulation for use in your accounts. Different chemical isomers perform differently, and the blend in CYPERTHOR is designed to give you premium performance. The high performance, quality insecticide that combines the powerful residual action of an alternative pyrethroid active whilst providing flush-out and knock down in the toughest situations.





# DELTATHOR<sup>®</sup>

## INSECTICIDE

The proven, high performance, quality insecticide that combines the most powerful residual action with the safety features you demand for long lasting control of insects.

### DELTATHOR PRODUCT DETAILS

- ✓ **Micro-fine Suspension Concentrate;** Most suspension concentrates use particle sizes closer to 10 - 20 microns. DELTATHOR has a uniform particle size of less than 5 microns. The micro-fine particle size gives you faster kill effects on insects and spiders. This is because the smaller particles penetrate the insect's cuticle quicker for fast control.
- ✓ **Withstands degradation by sunlight, heat & once dry is unaffected by rain;** To give you a better result and fewer call-backs.
- ✓ **Highest quality suspension formulation;** This ensures DELTATHOR stays in suspension in your tank longer to give you optimal results.
- ✓ **High quality water-based suspension concentrate;** To give you improved residual performance and no visible residues.
- ✓ **No hydrocarbon solvents;** Which means no worries about staining, no odour and no damage to your equipment, seals or pumps.
- ✓ **Approved for use indoors and outdoors, in food handling premises, hospitals, etc;** To give you maximum flexibility in your use of DELTATHOR.
- ✓ **Rapidly metabolised in plants and mammals;** Making it safe to use in even the most sensitive environments.

### DELTATHOR PRODUCT DETAILS

**Active Ingredient:** 10 g/L deltamethrin  
**Insecticide Group:** Pyrethroid  
**Formulation Type:** Micro-fine suspension concentrate  
**Pests Controlled:** Cockroaches, spiders, ants, fleas, silverfish, bed bugs, bird mites, carpet beetles, clothes moths, stored product insects, quarantine pests, five-spined bark beetles, furniture beetles, auger beetles, powderpost beetles, flies and mosquitoes  
**Pack Size/ Code:** 5 L (CHEDE1000)  
 1 L (CHEDE1002)  
**Resistance Group:** 3A

DELTATHOR is the ideal product for treating pests of timber and stored product insects.

### PERFORMANCE

DELTATHOR contains deltamethrin which remains arguably the most active of all the residual pyrethroids. This is because the deltamethrin in DELTATHOR is a pure, single isomer blend (Simplistically, an isomer is how the chemical is shaped). Different chemical isomers perform differently, and the blend in DELTATHOR is the most pure and insecticidally active giving you premium performance.

Deltamethrin has been registered in Australia for use by Pest Management Professionals since 1984, and personnel at Ensystex have been associated with the development and support of deltamethrin since before then, so you can be sure of quality advice and care. The high performance, quality insecticide that combines the powerful residual action of an alternative pyrethroid active whilst providing flush-out and knock down in the toughest situations.



# DIATHOR<sup>™</sup>

## BED BUG KILLER AEROSOL

Pesticide-free, long-term control of bed bugs, including on mattresses.

### DIATHOR KEY BENEFITS

- ✓ **Pesticide-free bed bug control.**
- ✓ **Mechanically removes the waxy layer;** Which causes the internal fluid in bed bugs to evaporate in just a few minutes.
- ✓ **Long-term residual control;** 12 months or more.
- ✓ **The unique grade of silicates used in DIATHOR have sharper edges;** to more effectively erode the bed bug exoskeleton.
- ✓ **Due to the physical mode of action of DIATHOR;** Controls insecticide resistant strains.
- ✓ **100% effective in the control of resistant and non-resistant bed bugs;** In trials conducted by Department of Medical Entomology, ICPMR, NSW Department of Health and FDA Medical Entomology in Thailand.
- ✓ **Odourless formulation;** Does leave a light residue, but does not stain.

### DIATHOR PRODUCT DETAILS

**Active Ingredient:** 12 g/kg amorphous silica  
**Insecticide Group:** N/A  
**Formulation Type:** Aerosol  
**Pests Controlled:** Bed bugs  
**Pack Size/ Code:** 250 g (CHEDIA1000)  
**Resistance Group:** N/A

### PERFORMANCE

Approved to apply directly to bedsteads, bedsprings, mattresses, floor coverings, upholstered furniture, cracks in walls, behind torn wallpaper, joints in woodwork and other harbourages.





# DIPHTHOR® DUO

## INSECTICIDE

### Insecticide for public health.

A ULV or Fogging spray for FAST action in the knockdown and kill of flying insect pests and cockroaches, DIPHTHOR DUO is simply the best for integrated pest management campaigns.

### DIPHTHOR DUO KEY FEATURES

- ✔ **Unique Formulation – mixes with oil or water;** Can be used for all situations due to flexible formulation options.
- ✔ **Extremely rapid knockdown and control of flying insect pests and cockroaches;** To give you a better result and fewer call-backs.
- ✔ **Packaged in easy pour, fluorinated, plastic containers;** This make it more convenient to use DIPHTHOR and enables you to measure required volumes more easily without spillage.
- ✔ **Highly active pyrethroid;** This ensures low application rates, minimal risk and highly successful control programs.
- ✔ **Label worded to allow for flexible application rates;** This puts you in total control and ensures DIPHTHOR DUO provides you with optimal levels of control in all types of application equipment, from ULV to thermal fogging to hand spray.
- ✔ **Scientifically proven and developed for use throughout Australia and SE Asia;** DIPHTHOR DUO has been independently tested to give you the confidence you need for large public health control programs.
- ✔ **Approved for use indoors and outdoors, around refuse tips, agricultural buildings, etc;** DIPHTHOR DUO is designed for use in applications in public health pest management programs, local council and Defence force programs and in the private sector. Wherever the pests are a problem, DIPHTHOR DUO is available.

### DIPHTHOR DUO PRODUCT DETAILS

**Active Ingredient:** 25 g/L cypermethrin  
**Insecticide Group:** Pyrethroid  
**Formulation Type:** Space spray  
**Pests Controlled:** Cockroaches, flies, biting midges and mosquitoes  
**Pack Size/ Code:** 1 L (CHED1001), 5 L (GHED1004)  
**Resistance Group:** 3A

### PERFORMANCE

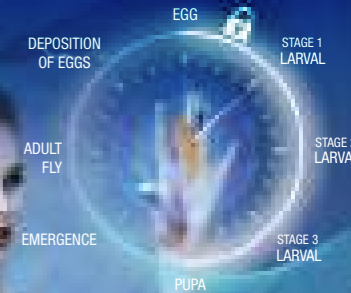
DIPHTHOR DUO is designed to be used at significantly lower levels of active ingredient than other competing products and still provide optimum control. This is due to the high potency of the active ingredient used in DIPHTHOR DUO. This means your public health pest management programs are much more cost effective when you use DIPHTHOR DUO and it means reduced insecticide load in the environment.

In independent Australian University trials, DIPHTHOR DUO provided 100% kill in all situations.

# EXOTHOR™

## INSECT GROWTH REGULATOR

Actively stop time on fly, flea & cockroach development.



### EXOTHOR KEY FEATURES

- ✔ **Insect Growth Regulator;** Prevents adult emergence of house flies, fleas and cockroaches.
- ✔ **Contains the active ingredient diflubenzuron;** An insect growth regulator which effects chitin synthesis in insects.
- ✔ **Selective mode of action;** Provides a high level of safety to higher order vertebrates (like mammals) and has strong residual activity.
- ✔ **Inevitable;** Slow but inevitable population decline in target pests.
- ✔ **The ONLY Water Dispersible Granule;** For prevention of adult emergence. Easy to handle with less risk of spillage when compared to liquid products.
- ✔ **Can be mixed with water;** For spraying for cockroaches, fleas or house flies.
- ✔ **Preventive;** Can be sprinkled into manure, etc for the prevention of emergence of adult house flies.
- ✔ **Compatible with most Ensystex adulticides;** Including ATTRATHOR™, MAXXTHOR™ and BITHOR™
- ✔ **The first product registered in Australia;** Using diflubenzuron for the control of public health pests.

### EXOTHOR PRODUCT DETAILS

**Active Ingredient:** 200 g/kg diflubenzuron  
**Insecticide Group:** Insect growth regulator  
**Formulation Type:** Water dispersible granule  
**Pests Controlled:** For the prevention of adult emergence  
**Pack Size/ Code:** 500 g (CHEEX1001)  
**Resistance Group:** 15



### PERFORMANCE

EXOTHOR inhibits the formation of N-acetylglucosamine, leading to reduced levels of chitin in the cuticle. Cuticular elasticity and firmness are directly affected. The imperfections in the cuticle are most evident at ecdysis (moulting) and lead to abortive moulting.

Thus EXOTHOR causes the insect to die in the immature stage (nymphal or larval stage) since a new exoskeleton cannot be formed. In addition EXOTHOR stops normal embryonic development.



# FUMITHOR<sup>TM</sup> DELTA

## INSECTICIDE SMOKE GENERATOR

FUMITHOR DELTA is a revolutionary new way of eliminating a wide range of flying and crawling insect pests, even in previously inaccessible places.



### FUMITHOR DELTA - REACHES FURTHER

- ✓ FUMITHOR DELTA uses smoke to reach inaccessible areas, penetrating deep into the tiniest cracks and crevices where the pests hide.
- ✓ With particle sizes down to just 1 micron the smoke can penetrate into places that are simply not reached by thermal fogs or ULV sprays.
- ✓ The active constituent - deltamethrin - is deposited on vertical, horizontal and underside of horizontal surfaces ensuring the most thorough treatment possible.
- ✓ There is nowhere for pests to hide from FUMITHOR DELTA!

### ✓ Powered by -Deltamethrin:

FUMITHOR DELTA is the only insecticide smoke generator to use deltamethrin, a broad spectrum pyrethroid, as the active constituent:

- FUMITHOR DELTA is proven in independent trials to be up to 10 times more potent than other smoke generators.
- Less insecticide per m<sup>3</sup> means it's more economical while reducing operator exposure to poison.
- Deltamethrin has been proven to have a good toxicological and environmental profile

### FUMITHOR DELTA PRODUCT DETAILS

**Active Ingredient:** 20 g/kg deltamethrin

**Formulation Type:** Ready to use smoke generator

**Registered to kill:** Ants, cockroaches, caterpillars, cockroaches, fleas, flies, mosquitoes, hide beetles, silverfish, bed bugs, spiders, stored product insects, bird mites, carpet beetles, clothes moths, aphids.

**Pack Size/ Code:** 40 g generator treats 250 - 500 m<sup>3</sup>, 12 x 40 g (CHEFD1001)  
20 g generator treats 125 - 250 m<sup>3</sup>, 20 x 20 g (CHEFD1000)

#### How to use:

ALWAYS READ THE COMPLETE PRODUCT LABEL FOR COMPLETE USE DETAILS.

- Close doors, windows and ventilators.
- Isolate or turn off any smoke alarms.
- Remove people, animals, fish and birds from area to be treated.
- Remove silk and rayon fabrics as discolouration may occur.
- Calculate the volume to be treated (volume = area x height) and determine how many generators are required. Space generators evenly through the building to be treated.
- Place the generator on a fireproof base at least 700 mm in diameter, on a protective floor covering or in a metal bucket.
- DO NOT remove protective cellophane sleeve around the generator.
- Ignite by lighting the protective cellophane sleeve.
- Always ignite those generators furthest away, lighting those nearest your exit last. Leave immediately after lighting smoke generators. The generator will burn for approximately 30 - 45 seconds, however keep area airtight for at least 3 hours after lighting.
- Ventilate for 30 - 60 minutes before re-entry.

#### Where to use:

Ideal for enclosed areas: such as storage sheds, warehouses, shipping containers, commercial buildings, industrial facilities and public spaces; Protects agricultural areas: including grain silos, glasshouses, animal housing and agricultural buildings; Rapid clean-out of insect pests: in commercial and domestic situations that need protecting quickly and effectively.

### PERFORMANCE

The FUMITHOR DELTA generator is ignited to fill the air with advanced smoke technology

#### MINIMAL IMPACT ON THE ENVIRONMENT:

Smoke vapour is the optimal method of transmission when targeting large areas due to the minimal quantities of pesticide required - protecting your property and the environment.

# HYMENOPTHOR<sup>®</sup> ULTRA

## GRANULAR ANT & COCKROACH BAIT

Targeted to kill all species of ants and cockroaches, including nymphal stages.



### HYMENOPTHOR ULTRA KEY FEATURES

- ✓ **Eliminates;** All species of ants and cockroaches, including large and small cockroach species.
- ✓ **Liquid Oil Phase Release<sup>TM</sup>;** Technology ensures uptake of the fipronil, and produces results equal to, or better than, those of gel baits for cockroaches - including nymphal stages.
- ✓ **Viral Feed Through Effect<sup>TM</sup>;** Of fipronil further ensures its rapid spread throughout ant colonies. Since fipronil is a quick acting insecticide, it is important to use it at a low rate to ensure it is spread throughout the entire colony.
- ✓ **Advanced Bait Technology<sup>TM</sup>;** Provides a unique composite of proteins, sugars and oils to target sugar feeding species, oil feeding species and protein feeding species.
- ✓ **Ultra Strong;** Performance is particularly spectacular when targeting cockroach nymphal stages, the most difficult life-stage to control.

### HYMENOPTHOR ULTRA PRODUCT DETAILS

**Active Ingredient:** 0.1 g/kg fipronil

**Insecticide Group:** Phenylpyrazole

**Formulation Type:** Granular bait - ready-to-use

**Pest Controlled:** Ants and cockroaches, all species

**Pack Size/ Code:** 450 g (CHEHU1000)

**Resistance Group:** 2B

### PERFORMANCE

As a granular bait, efficacy is enhanced by the ant's feeding behaviour. Worker ants are generally liquid feeders and cannot ingest solid baits. So they use their legs and mouthparts to physically carry the solid bait granules back to the nest for the larvae to digest and feed to the colony.

Therefore the bait is not diluted when it reaches the nest. In contrast with liquid or gel baits, the ants ingest the bait and then pass it through to nest mates by trophallaxis, which means there is some dilution of the toxicant as it is passed from one ant to the next. More importantly though, with the Liquid Oil Phase Release<sup>TM</sup> technology, the workers are also able to feed directly on the HYMENOPTHOR ULTRA and receive a toxic dose of the active, as well as feeding on the pre-digested liquid from the larvae.

Cockroaches have an exceptionally high preference for solid based foods, with bread ranking higher than most cockroach gels as a preferred food. HYMENOPTHOR ULTRA optimally satisfies cockroaches preference for a cereal based diet leading to aggressive feeding and a speed of kill better than that achieved with gel baits. The Liquid Oil Phase Release ensures the fipronil is readily digested by the cockroaches.



# MAGNATHOR™

## MAGNETIC INSECTICIDE WITH MAGTHANITE®

### MAGNETIC ATTRACTION - OUTSTANDING RESULTS

Eliminates termites, cockroaches and ants.



MAGNETIC ATTRACTION - OUTSTANDING RESULTS



#### MAGNATHOR KEY FEATURES

- ✓ **A totally novel approach to cockroach control;** MAGNATHOR MAGNETIC is a dry, flowable bait/powder. For cockroaches and ants, it contains a desirable blend of food attractants that lure the foraging insects towards the MAGNATHOR Kill Zone™. As they approach the Kill Zone, the insects literally act like a magnet and draw the MAGNATHOR particles to their exoskeletons resulting in their death.
- ✓ **Eliminates Termite Colonies;** MAGNATHOR MAGNETIC is applied directly on to termites or into their active workings, bivouacs or colonies. Just about anywhere termites exist and you need to get rid of them quickly, indoors or outside. For termite nests in trees, stumps, posts, fences, landscaping timbers, wharves, bridges, mounds and wall cavities, simply drill several holes into the nest and apply using the **ACCUTHOR Precision Blower** available exclusively from Ensystex. Monitor at weekly intervals and... watch the termites disappear!
- ✓ **Highly Effective;** MAGNATHOR delivers results

- ✓ **Magnetic Attraction;** MAGNATHOR employs the power of paramagnetism. The magnetic properties of the constituent powders of MAGNATHOR cause the powder to adhere to the insects' exoskeletons when they approach it. The powder enters the insects' bodies through the soft membranes in the exoskeleton. When compared with conventional treatments, MAGNATHOR's magnetic properties deliver superior results in the two critical areas of adhesion and transferability resulting in accelerated kill, and colony elimination!
- ✓ **Accelerated multiple cascade effect™;** MAGTHANITE's magnetic powder technology, powers MAGNATHOR's Accelerated Multiple Cascade Effect™ which provides a three-level mortality chain.
- ✓ **Active and Passive Kill;** The MAGNATHOR powder enters the insects through either ingestion or contact action through the soft membranes of the exoskeleton. The magnetic properties of MAGNATHOR deliver superior results.
- ✓ **Ultra Killing Power;** MAGNATHOR is powered by fipronil.

#### MAGNATHOR PRODUCT DETAILS

**Active Ingredient:** 0.5 g/kg fipronil  
**Insecticide Group:** Phenylpyrazole  
**Formulation Type:** Dry, flowable powder  
**Pests Controlled:** Cockroaches, ants and termites  
**Pack Size/ Code:** 4 x 30 g tubes (CHEMG1000)  
**Resistance Group:** 2B

#### PERFORMANCE

MAGNATHOR employs the power of paramagnetism. This is the weak magnetic attraction shown by insect exoskeletons. Insect chitin shows a clear attraction to ferromagnetic particles. The magnetic powder, MAGTHANITE, used in MAGNATHOR is a blend of Myranite and strontium ferrite. Research has supported the attraction between this ferromagnetic powder and insect cuticles. Tests by Smith and Moores at Rothamsted Experimental Station, UK showed that insects passing over a residual deposit of MAGTHANITE picked up an average of 56% more particulate material than those passing over a deposit of inert dust. In a further test they found that 250% more MAGTHANITE was transferred between insects. These paramagnetic processes are exploited by MAGNATHOR to provide rapid control of insect populations.

MAGTHANITE is a registered trademark of EIGH Energy Investment Group Holding Co. Ltd. and is protected by patents.

# MAXXTHOR®

## TERMITICIDE & INSECTICIDE

High performance termiticide and insecticide for indoors & outdoors.

Superior soil penetration, powerful performance, odourless, professional strength, water-based and long-term residual.



#### MAXXTHOR KEY FEATURES

- ✓ **A unique professional strength, water-based formulation containing 100 g/L bifenthrin that is priced to perform;** This gives you premium quality at a price you can truly afford.
- ✓ **MAXXTHOR is labelled for the long-term control of a wide range of pests including urban insect pests, vectors, spiders, ticks, turf insects and termites;** So when you carry MAXXTHOR with you it is a total solution for all your pest control needs.
- ✓ **MAXXTHOR Mosquito Protection Zone;** A Special program providing your clients with up to eight weeks of freedom from mosquitoes and other biting insects.
- ✓ **Odourless;** No need to worry about smells. Since this is a water-based product it is gentle on the nose.
- ✓ **Water-based;** No staining, no corrosion of your equipment.
- ✓ **Tested in Australian soils and through reticulation systems;** Since MAXXTHOR was the primary registrant we had to prove its performance in a wide range of soils. So you can be sure it offers the best quality termite barrier possible.
- ✓ **Withstands degradation by sunlight, rain and heat;** So you have fewer call backs.

- ✓ **Non-sensitising;** This means you are less likely to experience the skin tingling associated with most pyrethroids.
- ✓ **Safe to plants and rapidly metabolised by plants and animals;** In fact MAXXTHOR is designed for direct application to foliage. And the active ingredient is in widespread use on a wide range of food crops.
- ✓ **Approved for use indoors and outdoors, in the most sensitive areas;** So you can take it anywhere with you.
- ✓ **No hydrocarbon solvents;** So you have no worries about staining, odours, or equipment corrosion.
- ✓ **Approved for both pre-construction and post-construction termite management;** A total termite solution.
- ✓ **Long term residual;** There is no product on the market with a longer label claim for termite management. MAXXTHOR claims protection for ten years or more.
- ✓ **Contains Ensystex's unique Microbial Protection Blend™;** To ensure the product remains fresh out in the field and in the back of your truck.

#### MAXXTHOR PRODUCT DETAILS

**Active Ingredient:** 100 g/L bifenthrin  
**Insecticide Group:** Pyrethroid  
**Formulation Type:** Micro-fine suspension concentrate (water-based)  
**Pest Controlled:** Controls a wide range of pests as per the product label  
**Pack Size/ Code:** 5 L (CHEMX2010)  
**Resistance Group:** 3A

#### PERFORMANCE

MAXXTHOR also comes with the Ensystex Ten Year Performance Guarantee.\*



# MAXXTHOR<sup>®</sup> DEUCE

## TERMITICIDE & INSECTICIDE

Double the Strength - Double the Value - Double Trouble for Pests.



# MAXXTHOR<sup>®</sup> SAND GRANULE INSECTICIDE

Penetrates deep for more effective control. The perfect choice for the toughest outdoor jobs. No odour, high performance, and long-term residual action.



### MAXXTHOR DEUCE KEY FEATURES

- ✓ **Double Strength;** MAXXTHOR DEUCE is a double-strength version of Ensysstex's best-selling MAXXTHOR.
- ✓ **Containing 200 g/L bifenthrin;** MAXXTHOR DEUCE is double the strength of other bifenthrin products.
- ✓ **A unique water-based solution;** It is more effective for the control of termites and killing a wide range of other pests.
- ✓ **Safer;** Water based solution is safer to use.
- ✓ **Range of application;** MAXXTHOR DEUCE has a large range of application techniques, including trenching, rodding, reticulation and spraying.
- ✓ **Optimised;** Non-staining, odourless, has low sensitisation and is non-allergenic.
- ✓ **Guaranteed;** Covered by Ensysstex's Ten Year Performance Guarantee\*, or we will pay for any retreatment and repairs.
- ✓ **Uses Ensysstex's Microbial Protection Blend™;** Which uniquely provides protection against both gram-positive and gram-negative bacteria, thus ensuring the highest quality product at all times.
- ✓ **With only half the regular amount needed;** It is easier to store, transport and apply.

### MAXXTHOR DEUCE PRODUCT DETAILS

<b>Active Ingredient:</b>	200 g/L bifenthrin
<b>Insecticide Group:</b>	Pyrethroid
<b>Formulation Type:</b>	Micro-fine suspension concentrate (water-based)
<b>Pest Controlled:</b>	Controls a wide range of pests as per the product label
<b>Pack Size/ Code:</b>	5 L (CHEMD1000)
<b>Resistance Group:</b>	3A

### PERFORMANCE

With less to store, carry and use, this efficient product also comes with the Ensysstex Ten Year Performance Guarantee\*.

\* conditions apply.

### MAXXTHOR SAND GRANULE INSECTICIDE KEY FEATURES

- ✓ **Heavy sand granule formulation penetrates the densest foliage to get the insecticide to where the pests are;** This makes MAXXTHOR Sand Granule Insecticide the optimal product for external control of ants, fleas and ticks in gardens, lawns, around BBQ's, the perimeter of properties, etc.
- ✓ **Withstands degradation by sunlight & heat;** To give you better results and fewer call-backs.
- ✓ **Not affected by rain;** In fact MAXXTHOR Sand Granules can be activated by spraying with water. This also means you can apply it in rainy weather so there is no need to cancel jobs due to inclement weather.
- ✓ **Not noticeable on most target surfaces;** Your clients see little evidence of your actual treatment, simply a reduction in their ant problems.
- ✓ **Non-sensitising;** No skin sensitivity issues under normal usage.
- ✓ **Safe to plants;** Can be safely applied to plants, lawns, shrubs for tick or ant control in particular, without any adverse effects.
- ✓ **Can be applied around Exterra Monitoring Stations;** This can help you resolve problems in-ground with ants infesting your EXTERRA program. This is the only granular product approved for this usage. It can also be placed underneath the EXTERRA Termite Baiting Station. NB DO NOT apply directly to station or interceptors.
- ✓ **Not classified as a scheduled poison;** So you can use MAXXTHOR Sand Granule Insecticide with confidence in even the most sensitive environments.
- ✓ **No mixing, no dilution;** Makes MAXXTHOR Sand Granule Insecticide quick and convenient to use and speeds up your treatment process.
- ✓ **Rapidly metabolised in plants and mammals;** Making it safe to use in even the most sensitive environments.

### MAXXTHOR SAND GRANULE INSECTICIDE PRODUCT DETAILS

<b>Active Ingredient:</b>	2 g/kg bifenthrin
<b>Insecticide Group:</b>	Pyrethroid
<b>Formulation Type:</b>	Sand granules
<b>Pests Controlled:</b>	Ants, fleas, ticks and lawn pests
<b>Pack Size/ Code:</b>	4 x 5 kg (CHEMX1021)
<b>Resistance Group:</b>	3A

### PERFORMANCE

MAXXTHOR SAND is a pyrethroid insecticide. MAXXTHOR SAND was developed and formulated specifically for professional pest management treatments. Ideal for use as a repellent barrier on lawns, garden beds, in between pavers or any other external situation.

MAXXTHOR SAND will reactivate each time moisture is introduced and remain active for longer. Since BITHOR is a pyrethroid insecticide it displays relatively low levels of mammalian and avian (bird) toxicity.



# MAXXTHOR<sup>®</sup> TURBO

## TARGETED INSECTICIDE

Turbo charge your clients into the future, today. STOP Callbacks, increase client satisfaction through Superfast knockdown, Long term residual performance, Resistance Fighter.



### MAXXTHOR TURBO KEY FEATURES

- ✓ **Revolutionary;** New suspo-emulsion formulation combines three active ingredients together to work better than anything you have experienced before.
- ✓ **Turbo Kill;** The turbo charged oil phase enters rapidly through the insect's spiracles; allowing the oil phase insecticides to instantly halt the insect nervous system.
- ✓ **Long Term;** The micro-particles of bifenthrin are evenly spread by the TURBO organic phase ensuring long-term protection.
- ✓ **Resistance Fighter;** Piperonyl butoxide works to inhibit the enzymes that breakdown and detoxify pyrethroids, thus restoring their effectiveness against resistant or tolerant insects. Moreover it has also been proven to delay resistance development. Piperonyl butoxide is a specific inhibitor of microsomal oxidases, and has also been shown to inhibit resistance-associated esterases. Both these modes of action serve to enhance and potentiate the power of MAXXTHOR TURBO to ensure you get the best results.

### MAXXTHOR TURBO PRODUCT DETAILS

**Active Ingredients:** 100 g/L bifenthrin, 10 g/L imiprothrin, 120 g/L piperonyl butoxide  
**Insecticide Group:** Synergised pyrethroid  
**Formulation Type:** Suspo-emulsion  
**Pests Controlled:** Controls a wide range of pests as per the product label  
**Pack Size/ Code:** 1 L (CHEMT1002)  
**Resistance Group:** 3A

### PERFORMANCE

A real problem with pyrethroid insecticides is the way they can scatter the insects, especially cockroaches. This in turn can lead to a spread of the problem. Now MAXXTHOR TURBO provides a total solution through the super fast action of imiprothrin, and its exceptional activity against cockroaches.

This speed of action arises as a consequence of imiprothrin acting much faster at the target site, the insect nervous system, than any other pyrethroid. When imiprothrin is applied directly to the cockroach nervous system, there is a rapid decline in spontaneous firing, followed by the rapid and complete disappearance of any charge.

# PERMETHOR<sup>®</sup> INSECTICIDAL DUST

The finest dust for professional pest managers. Your Number One choice for ready-to-use, broad spectrum control in roofs and wall voids. Flows deeper into cracks and voids to give you optimal results.



### PERMETHOR KEY FEATURES

- ✓ **Exceptionally light dust formulation;** To flow further and deeper into cracks, crevices and voids where pests are found. This ensures you are easily able to get the product where it will be most effective.
- ✓ **Odourless;** This means that, when correctly applied, your clients see little evidence of your actual treatment, simply a reduction in their pest problems.
- ✓ **Wide use;** A broad label that even includes control of European wasps and feral honey bees so you can target the broadest spectrum of pests.
- ✓ **Withstands heat;** Very low degradation in high temperatures to give you better results and fewer call-backs.
- ✓ **Finer dust;** To give you superior coverage to apply the finest of coatings to surfaces. The finer the dust coating the more likely the pests are to make contact and pick-up the insecticidal deposit providing you with long term effective control.
- ✓ **Non-sensitising;** Under normal usage conditions you can expect no sensitivity issues.
- ✓ **Long residual activity;** Of up to 6 months or more so you can provide your clients with long-term insect control and minimise call-backs.

### PERMETHOR PRODUCT DETAILS

**Active Ingredient:** 10 g/kg permethrin  
**Insecticide Group:** Pyrethroid  
**Formulation Type:** Ready to use dust  
**Pests Controlled:** Cockroaches, silverfish, ants, fleas, carpet beetles, bed bugs, spiders, bird mites, hide beetles, mushroom sciarid flies, potato moths, subterranean termites, European wasps and feral honey bees  
**Pack Size/ Code:** 10 kg (CHEPE1000)  
 5 kg (CHEPE1003)  
**Resistance Group:** 3A

PERMETHOR is a pyrethroid insecticide. PERMETHOR was developed and formulated specifically for professional pest managers.

### PERFORMANCE

PERMETHOR dust is ideal for areas where liquid based formulations are not suitable. This includes large voids or areas where there is a risk of corrosion or spray drift to electrical equipment. For best results in roof or wall voids apply using a power duster. PERMETHOR is most effective when a fine coating only is applied. Ensure you use the lightest application of dust and avoid "mounds" of dust as insects will not pass through these.

PERMETHOR is also ideal for use as a flushing agent during inspections to identify cockroach and other pest harbourages. For the most effective control use PERMETHOR in association with a liquid spray to other pest harbourages and surfaces using products such as BITHOR, CYBERTHOR or MAXXTHOR.



# PERMETHOR<sup>®</sup> MAGNETIC

## INSECTICIDAL DUST WITH MAGTHANITE<sup>®</sup>

Setting a new standard in dusting treatments. The light formulation flows deeper and further into voids and crevices, leaving a finer more effective deposit. Now formulated with our unique magnetic carrier, Magthanite, PERMETHOR MAGNETIC provides faster kill and improved transfer due to the magnetic attraction.



### PERMETHOR KEY FEATURES

- ✔ **Magnetic Attraction;** PERMETHOR MAGNETIC employs the power of paramagnetism. The magnetic properties of one of the constituent powders of PERMETHOR MAGNETIC cause the powder to adhere to the insects' exoskeletons when they approach it. The powder enters the insects' bodies through the soft membranes in the exoskeleton. When compared with conventional treatments, PERMETHOR MAGNETIC's magnetic properties deliver superior results in the two critical areas of adhesion and transferability resulting in accelerated kill.
- ✔ **Exceptionally light dust formulation;** To flow further and deeper into cracks, crevices and voids where pests are found. This ensures you are easily able to get the product where it will be most effective.
- ✔ **Improved performance;** especially on initial application due to magnetic properties ensuring faster pick-up and transfer of the active.
- ✔ **Odourless;** This means that, when correctly applied, your clients see little evidence of your actual treatment, simply a reduction in their pest problems.
- ✔ **Wide use;** A broad label that even includes control of European wasps and feral honey bees so you can target the broadest spectrum of pests.
- ✔ **Withstands heat;** Very low degradation in high temperatures to give you better results and fewer call-backs.
- ✔ **Finer dust;** To give you superior coverage to apply the finest of coatings to surfaces. The finer the dust coating the more likely the pests are to make contact and pick-up the insecticidal deposit providing you with long term effective control.
- ✔ **Non-sensitising;** Under normal usage conditions you can expect no sensitivity issues.
- ✔ **Long residual activity;** Of up to 6 months or more so you can provide your clients with long-term insect control and minimise call-backs.

### PERMETHOR PRODUCT DETAILS

<b>Active Ingredient:</b>	10 g/kg permethrin
<b>Insecticide Group:</b>	Pyrethroid
<b>Formulation Type:</b>	Ready to use dust
<b>Pests Controlled:</b>	Cockroaches, silverfish, ants, fleas, carpet beetles, bed bugs, spiders, bird mites, hide beetles, subterranean termites, European wasps and feral honey bees
<b>Pack Size/ Code:</b>	5 kg (CHEPEM1001)
<b>Resistance Group:</b>	3A

### PERFORMANCE

PERMETHOR MAGNETIC is ideal for areas where liquid based formulations are not suitable. This includes large voids or areas where there is a risk of corrosion or spray drift to electrical equipment. For best results in roof or wall voids apply using a power duster. PERMETHOR MAGNETIC is most effective when a fine coating only is applied. Ensure you use the lightest application of dust and avoid "mounds" of dust as insects will not pass through these. With its unique magnetic properties it will out perform any other dust on the market for speed of kill and pest elimination.

PERMETHOR MAGNETIC is also ideal for use as a flushing agent during inspections to identify cockroach and other pest harbourages. For the most effective control, use PERMETHOR MAGNETIC in association with a liquid spray to other pest harbourages and surfaces using products such as BITHOR, CYPERTHOR or MAXXTHOR. This unique chemistry means that PROTHOR is relatively slow to bind to soil particles, but once it does bind, it grips very tightly to ensure the Termite Defence Zone remains in place for a long time; to keep on killing termites. This hysteretic binding effect is important because it ensures that the PROTHOR Defence Shield<sup>™</sup> created around your clients home is as complete and continuous as possible.

# PROTHOR<sup>™</sup> 200 SC TERMITICIDE

The protector providing a professional standard for protecting buildings against termites.



### PROTHOR KEY FEATURES

- ✔ **Innovative Formulation;** Ensystex have taken the formulation of imidacloprid as a termiticide to the next level. With a micro-fine suspension concentrate ensuring particle sizes of less than 5 microns for better soil penetration and viral transfer. PROTHOR is also blended to protect it better from degradation in your vehicles.
- ✔ **PROTHOR is undetectable;** Some soil treatment termite control products do not kill termites, instead they repel them. These products are effective when applied in a perfect and continuous gap-free termite barrier, but if there are any gaps in the barrier through which termites can enter, its 'hello termites'.
- ✔ **Minimal impact on the environment and you;** Studies have shown that during applications of PROTHOR, airborne residues of PROTHOR in the structure are minimal. This means it is safe to remain at home while the PROTHOR Termite Defence Zone is being applied under and around your home. This is unlike some other termiticides which require you to vacate your home while they are being applied.
- ✔ **PROTHOR is easy on the nose;** In fact PROTHOR is almost odourless since it is a water-based product.
- ✔ **Non-sensitising;** This means no unpleasant sensations as often caused by other termiticides.
- ✔ **Safe to plants and rapidly metabolised;** In fact the active in PROTHOR is widely used on agricultural food crops, in orchards, nurseries and in products applied directly to pets.
- ✔ **Approved for post-construction and pre-construction treatments;** For pre-construction PROTHOR should be applied through a reticulation system.
- ✔ **Employs Ensystex's unique Microbial Protection Blend<sup>™</sup>;** To ensure the product remains fresh out in the field and in the back of your truck.

### PROTHOR PRODUCT DETAILS

<b>Active Ingredient:</b>	200 g/L imidacloprid
<b>Insecticide Group:</b>	Neonicotinoid
<b>Formulation Type:</b>	Water based, micro-fine suspension concentrate
<b>Pests Controlled:</b>	Termites
<b>Pack Size/ Code:</b>	3 L (CHEPR1000)

### PERFORMANCE

When applied to soil at recommended rates, PROTHOR is undetectable by termites as they tunnel through it. Since termites can't detect PROTHOR treated soil, they can't avoid it and are killed by their contact with it. We call this the PROTHOR Termite Defence Zone<sup>™</sup>.

When termites unknowingly tunnel through PROTHOR treated soil, they accumulate PROTHOR on the outside of their bodies. PROTHOR does not immediately kill termites exposed to it. The delayed toxicity of PROTHOR allows contaminated termites to interact with non-exposed termite nestmates. This interaction can take place over three days. This ensures greater transfer and kills more termites than similar products. Non-affected termites that clean and groom other termites recently exposed to PROTHOR are themselves secondarily exposed and killed. This transmission of PROTHOR from termite to termite which cannot be detected or avoided by termites is referred to as the PROTHOR Viral Effect<sup>™</sup>.

The active ingredient in PROTHOR has some very special and unique soil binding properties. Chemists call these properties Hysteretic Binding. This unique chemistry means that PROTHOR is relatively slow to bind to soil particles, but once it does bind, it grips very tightly to ensure the Termite Defence Zone remains in place for a long time; to keep on killing termites. This hysteretic binding effect is important because it ensures that the PROTHOR Defence Shield<sup>™</sup> created around your clients home is as complete and continuous as possible.





# ULTRATHOR™

## WATER-BASED TERMITICIDE & INSECTICIDE

Powered by fipronil, the active you know and trust. Guaranteed to provide protection against termite entry for up to 8 years or more\*.

### ULTRATHOR KEY FEATURES

- ✔ **Non-repellent to termites;** So they are totally unaware of its presence in the soil.
- ✔ **Absorbs tightly to soil, has low solubility in water, and a low vapour pressure;** As do its environmental degradates. Low application rates, combined with the unique ULTRATHOR formulation also reduces the risk of run-off.
- ✔ **Fast elimination;** Of termites attacking buildings together with highly effective, long-term residual control.
- ✔ **Viral Transfer Effect™;** This unique mode of action allows ULTRATHOR to rapidly spread throughout the termite colony, the same way a virus spreads through the internet, infecting all in its path.

### ULTRATHOR PRODUCT DETAILS

- Active Ingredient:** 100 g/L fipronil
- Insecticide Group:** Phenylpyrazole
- Formulation Type:** Micro-fine water-based suspension concentrate
- Pests Controlled:** Termites, ants, millipedes, house crickets, and earwigs.
- Pack Size/ Code:** 1 L (CHEUL1017)  
3 L (CHEUL1000)
- Resistance Group:** 2B



### PERFORMANCE

When termites approach the ULTRATHOR Termite Defence Zone™, they pick up the molecules of fipronil. Those termites that remain in the *Termite Defence Zone*, blissfully unaware of the presence of ULTRATHOR, will quickly die. Those termites that do not remain tunnelling into the ULTRATHOR Termite Defence Zone usually survive long enough to transfer the ULTRATHOR to other termites in the colony through grooming.

ULTRATHOR is toxic to termites by contact or ingestion. It causes death to termites by disrupting their nervous system. It binds to three types of chloride-channels on the membranes of insect neurons, preventing calcium ion influx into the cell. One of these channels is controlled by the neurotransmitter gamma-aminobutyric acid (GABA) and the other two are controlled by glutamate. The presence of three different target sites accounts for ULTRATHOR's high potency against termites.

\*Visit [www.ULTRATHOR.com.au](http://www.ULTRATHOR.com.au) to learn more about our 8 year guarantee.



# VECTOTHOR™

## FLY BAIT

### ATTRACTION PROVES DEADLY FOR FLIES

### VECTOTHOR FLY BAIT OVERVIEW

This fly bait is not only effective in eliminating flies, but has a versatile array of applications to suit many and varied indoor and outdoor applications.

### VECTOTHOR FLY BAIT KEY FEATURES

- ✔ **Scientifically tested;** The formula of sugars and sex attractant contained in VECTOTHOR Fly Bait has been scientifically tested to prove its effectiveness in attracting flies.
- ✔ **Irresistible;** Flies are irresistibly drawn to the surface where they are knocked down.
- ✔ **Attractive;** VECTOTHOR granule fly bait for dry surfaces is blue in colour, following scientifically proven data indicating it to be the most effective colour for attracting flies.
- ✔ **Water Dispersible;** Formulated as a Water Dispersible Granule (WDG) so that it may be used directly in the granule formulation as a fly bait, diluted with a small amount of water for making a paste, or diluted with a larger volume of water to allow it to be quickly sprayed on to walls and other surfaces on which flies alight.

### VECTOTHOR FLY BAIT PRODUCT DETAILS

- Active Ingredients:** 5 g/kg imidacloprid, 1 g/kg (z)-9-tricosene
- Pesticide Group:** Neonicotinoid
- Formulation Type:** Ready to use granular bait and water dispersible granule (WDG)
- Pests Controlled:** Flies
- Pack Size/ Code:** 500 g (VECB1000)

### PERFORMANCE

Performance is optimal when it is used as a dry granular bait. This form boasts a unique blue colour and optimised release of the female sex pheromone. Overseas research has proven flies show greater attraction to certain colours. VECTOTHOR Fly Bait blue colour was significantly more effective than all other colours tested. VECTOTHOR Fly Bait offers superior control around the exterior of buildings and in poor hygiene areas around garbage disposal areas; and it complements the use of the class-leading VECTOTHOR Electronic Fly-Killers developed by Ensystex for use indoors and in HACCP environments.





# ZENITHOR™ GEL ANT BAIT

The Zenith of Ant Bait Innovation

Premium quality, professional gel bait that targets most pest species of ants including all species of sugar (sweet) feeders.

## ZENITHOR KEY FEATURES

- ✓ **Superior Gel Properties;** Formulated to provide a stable gel even in hot tropical conditions, whilst providing a moist, viscous presentation to ensure superior consumption by ants for an extended time frame.
- ✓ **Superior Active;** Contains 0.5 g/kg (S)-indoxacarb. Technical grade indoxacarb is a 75:25 blend of (S) and (R) isomers, though it is only the (S)-isomer that is insecticidally active.
- ✓ **ZENITHOR Enzyme Bio-activation™;** Following consumption, ZENITHOR is metabolised into a deadly insect neurotoxin, causing gradual death. This requirement for the conversion of the active provides a safety factor since it is effectively 'activated' by the insect.
- ✓ **Eliminates Ant Colonies;** Contains specialised food attractants to target the widest range of nutritional needs of a broad spectrum of pest ants.
- ✓ **Viral Transfer Effect™;** Since it is a liquid gel, it can easily be consumed directly by all worker ants. They can then feed it directly to the larvae, soldiers and queen. This process takes time. This is where the magic of ZENITHOR Enzyme Bio-activation is important. This takes a few hours to occur which means the ants have time to return to the colony and share the toxicant through trophallaxis.

## ZENITHOR PRODUCT DETAILS

**Active Ingredient:** 0.5 g/kg (S)-indoxacarb  
**Pesticide Group:** Oxadiazine  
**Formulation Type:** Liquid gel bait - ready-to-use  
**Pests Controlled:** Ants  
**Pack Size/ Code:** 4 x 30 g (CHEZN1000)  
**Resistance Group:** 22A

## PERFORMANCE

ZENITHOR Gel Ant Bait represents the culmination of many years of patient research, detailed formulation development and field trials to provide you with the most palatable and effective ant gel.

ZENITHOR Gel Ant Bait is highly attractive to ants immediately upon application and remains palatable for an extended period. However, the majority of ant feeding activity occurs within the first 24 - 72 hours after placement.



# ZENITHOR™ GEL COCKROACH BAIT

A LEGEND EMERGES

ZENITHOR was developed with the view of creating a legendary cockroach gel bait, a gel bait that outperforms all others.

## ZENITHOR KEY FEATURES

- ✓ **Ensures Faster Kill;** In trials with the German cockroach (*Blattella germanica* Linnaeus), ZENITHOR killed more than 80% of the cockroaches within 24 hours and 100% mortality occurred after 72 hours. It well out-performed even the leading fipronil based cockroach gel bait.
- ✓ **Enhanced Palatability;** To ensure optimal feeding, ZENITHOR's fine dining recipe provides a complete nutrient source including novel ingredients to ensure it is eaten in preference to competing foods in the environment.
- ✓ **Synergised High-Consumption Bait Technology™;** Provides a unique and novel range of natural sensory attractants to draw the cockroaches to the bait spots, together with some carefully selected feeding stimulants to promote increased consumption of gel baits, leading to improved performance.
- ✓ **Viral Excretion Transfer™;** ZENITHOR intoxicated cockroaches contaminate their harbourages and the surrounding environment with ZENITHOR-enriched vomitus and faeces to create the most potent Transfer Effect. Viral Excretion Transfer is critical for passing the toxicant on to early instar nymphs, that do not venture far for their food resources.
- ✓ **ZENITHOR Enzyme Bio-activation™;** Following consumption, ZENITHOR is metabolised into a deadly insect neurotoxin, causing gradual death. This requirement for the conversion of the active provides a safety factor since it is effectively 'activated' by the insect.
- ✓ **Eliminates bait adverse cockroaches;** It is well documented that populations of the German cockroach have rapidly evolved an adaptive behavioural aversion to glucose, a component of most commercial baits. ZENITHOR does not use glucose in the formulation, so it can effectively tackle the toughest cockroach jobs.

## ZENITHOR PRODUCT DETAILS

**Active Ingredient:** 6.0 g/kg (S)-indoxacarb  
**Pesticide Group:** Oxadiazine  
**Formulation Type:** Gel bait - ready-to-use  
**Pests Controlled:** Cockroaches  
**Pack Size/ Code:** 4 x 30 g (CHEZA1002)  
**Resistance Group:** 22A

## PERFORMANCE

ZENITHOR's outstanding performance arises from our most complex cockroach gel formulation to date. Employing the most sophisticated gel chemistry, ZENITHOR provides improved physical performance; giving you the functional features you demand in terms of ease of application, with the gel spots staying put, whilst still retaining their high moisture content to provide improved flavour for cockroaches - and longer-lasting results.

But there is even more to this new legend, ZENITHOR introduces more than ten feeding stimulants and sensory attractants to maximise cockroach feeding, deliver faster kill and ensure total elimination of all cockroach aggregates.

ZENITHOR Gel Cockroach Bait has been formulated to provide a stable gel, even in hot kitchens and tropical environments, whilst retaining a moist, viscous presentation at all times to ensure superior consumption by cockroaches for an extended time frame.



# EXTERRA<sup>®</sup>

## TERMITE COLONY ELIMINATION WITH REQUIEM<sup>®</sup> TERMITE BAIT

The World's Number One Termite Baiting System, Total Elimination of Termites – GUARANTEED.

### EXTERRA KEY FEATURES

- ✓ **Environmentally friendly;** EXTERRA is different. A truly safe, environmentally friendly way to eliminate termites, EXTERRA uses a termite's natural instincts against them, eliminating the attacking termites AND their whole colony.
- ✓ **Total Security;** Protects from the invasion of termites, continually. Even after the colony is eliminated, EXTERRA Stations guard using the natural power of CO<sub>2</sub>, monitoring for future invasions without the ongoing need to reapply chemicals. EXTERRA provides a long term termite solution that's easy on both you and the environment.
- ✓ **EXTERRA and Australian Wildlife Conservancy;** Partners for Life. When you install the environmentally friendly EXTERRA Termite Interception and Baiting System, you will be supporting Australian Wildlife Conservancy.
- ✓ **REQUIEM<sup>®</sup>;** is the most palatable termite bait in the world, it is truly irresistible to termites. Housed within the EXTERRA Station, it is this greatly superior palatability that makes EXTERRA the number one system in the world.
- ✓ **EXTERRA;** is safe for you, your family, pets and nature. EXTERRA focuses on total termite colony elimination without chemicals, guaranteeing the most effective results.
- ✓ **FOCUS Termite Attractant<sup>™</sup>;** EXTERRA is the only system that uses naturally generated CO<sub>2</sub> to attract the termites into the Stations to guarantee quicker interception and better results.
- ✓ **Larger Stations;** Preferred by termites to further improve performance.

### REQUIEM PRODUCT DETAILS

**Active Ingredient:** 1.0 g/kg chlorfluazuron  
**Insecticide Group:** Insect growth regulator  
**Formulation Type:** Cellulose based bait  
**Pests Controlled:** Subterranean termites

### PERFORMANCE

In-ground Stations containing eucalypt timber interceptors are placed in-ground to intercept foraging termites and protect the property. Above-ground Stations are the preferred approach when termites are already active in the property. REQUIEM<sup>™</sup> Termite Bait is placed in the sealed station when it is installed. Above-ground Stations speed up the process of colony elimination. After the termite colony is eliminated, the Above-ground Stations are removed.

When the termites are intercepted, they are easily detected in the EXTERRA Stations. The unique (patented) design allows for termites to be seen without disturbing them. And the termites are not disturbed when the REQUIEM Termite Bait is added either. REQUIEM Termite Bait is highly palatable and consumed in preference to timber. In fact, termites can't resist REQUIEM, leading to the colony's quick demise.

# NOVITHOR<sup>™</sup>

## THE PESTICIDE FREE TERMITE PROTECTION SYSTEM

Termites will be turned away from your property every time.

### NOVITHOR KEY FEATURES

- ✓ **Pesticide Free;** The NOVITHOR System consists of three pesticide free elements which, in combination, ensure any construction type can be securely protected.
  - NOVITHOR TERMITE PROOFING RESIN
  - NOVITHOR TERMITE PROOF CEMENTITIOUS PARGE
  - NOVITHOR TERMITE PROOF FLEXI-GEL
- ✓ **Impenetrable;** Creates an impenetrable barrier to prevent the ingress of subterranean termites.
- ✓ **Pre or Post construction;** All three elements work by creating an impregnable barrier that termites cannot chew through or damage, and that is resistant to their secretions. In fact, NOVITHOR Termite Proofing Resin and NOVITHOR Termite Proof Cementitious Parge are granite-like when set.
- ✓ **Invisible;** Once applied, the NOVITHOR Pesticide Free Termite Protection System is not an eye sore on the completed structure; indeed the finished barrier is invisible to the naked eye.
- ✓ **Quality;** Ensyslex are able to confirm its presence through analytical methods to ensure Quality Control at installations.
- ✓ **Liquid protection;** NOVITHOR Termite Proofing Resin is a liquid formulation containing a specially formulated blend of resins. It is applied to masonry mortar joints and rendered masonry surfaces.
- ✓ **Microscopic technology;** An untreated property is vulnerable to attack by termites. Termites burrow into cracks, removing sediment as they travel and their secretions break down normal mortar over time. NOVITHOR Termite Proofing Resin locks together with sand and cement particles to form an impenetrable termite proof barrier, working at microscopic levels.
- ✓ **Termite Proof sealant;** NOVITHOR Termite Proof Cementitious Parge contains the unique resins that solidify to turn it into a granite-like barrier that is impenetrable to termites.
- ✓ **Neutral Cure Silicone;** NOVITHOR Termite Proof Flexi-Gel is a high performance neutral cure silicone sealant and adhesive, specifically formulated for termite proofing buildings during construction. It is suitable for use indoors, outdoors or in confined spaces.

### NOVITHOR PRODUCT DETAILS

**Formulation Type:** Consists of three pesticide free elements used in combination

- NOVITHOR TERMITE PROOFING RESIN
- NOVITHOR TERMITE PROOF CEMENTITIOUS PARGE
- NOVITHOR TERMITE PROOF FLEXI-GEL

### PERFORMANCE

The NOVITHOR Pesticide Free Termite Protection System is guaranteed to stop termites entering a property by sealing all entry points with a granite-like barrier. It is used to protect: All mortar joints between bricks • All joints in concrete slabs and walls, including basement walls, CBP walls, diaphragm walls, RC walls, etc. • Around all penetrations through concrete walls and floors • Around all conduits and / or service pipe openings • Around all major plant boxes • On retaining walls • On selected masonry surfaces • On rendered and concrete surfaces.





# TRITHOR<sup>®</sup> Termite Protection

**AUSTRALIA'S TRUSTED  
NUMBER ONE TERMITE  
SECURITY SYSTEM.**

TRITHOR has you covered for fifty years!

## TRITHOR KEY FEATURES

- ✔ **A Physical Termite Protection System;** That deters concealed entry by termites. This is because termites can not get through TRITHOR...
- ✔ **Safer to Use;** Since the active ingredient in TRITHOR is securely locked away, TRITHOR is safer to use and better for the environment.
- ✔ **Actively Kills Termites too;** Unlike many other physical termite protection systems, TRITHOR contains crystals of a highly potent termite control agent so it actively kills and deters termites.
- ✔ **Flexible;** TRITHOR is a flexible termite management system that may be installed in many difficult and complicated situations including multiple penetrations, step downs, etc.
- ✔ **Tough;** TRITHOR is exceptionally tough. A very sharp cutting blade is required to cut the TRITHOR fabric. Blunt objects, workmen's boots, etc. have no chance of penetrating TRITHOR. In the unlikely event that a hole is accidentally produced, it is easily repaired.
- ✔ **Building Code Compliant;** TRITHOR holds a CodeMark Certificate of Conformity, CM20008, confirming compliance with the Building Code of Australia Volume One BP1.1 & BP1.2, and Volume Two P2.1.1 including state addition QLD 2.1.3.

## TRITHOR PRODUCT DETAILS

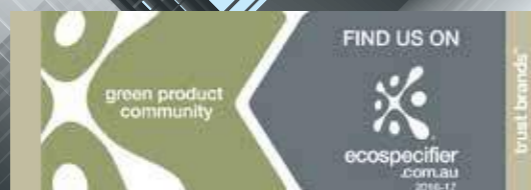
**Active Ingredients:** 2.0 g/kg deltamethrin  
**Insecticide Group:** Pyrethroid  
**Formulation Type:** Sheet material  
**Pests Controlled:** Subterranean termites  
**Resistance Group:** 3A



## PERFORMANCE

TRITHOR™ consists of a geotextile blanket impregnated with deltamethrin. Our unique Thermo-compression Technology™ then locks the deltamethrin into the blanket before it is laminated top and bottom with a rugged plastic membrane. This complex entrapment process ensures that the deltamethrin remains trapped within the inner blanket.

This means it is non-hazardous to anyone handling the product or who comes into contact with it. The inner blanket forming the core of TRITHOR adds to the durability and effectiveness of TRITHOR Termite Protection, as well as ensuring the deltamethrin remains encased so it cannot escape into the environment. TRITHOR has undergone extensive independent evaluation.



## DISINFECTS AND PURIFIES THE AIR YOU BREATHE

The VECTOTHOR AIR160 employs the same three air disinfection technologies used to purify the air in hospital operating theatres; so it genuinely eliminates viruses, bacteria, moulds and other pollutants.



## ADVANTAGES OF THE VECTOTHOR AIR160

- ✔ **Disinfects and purifies;** The air up to 99.99%
- ✔ **Eliminates micro-organisms;** That are present in the air
- ✔ **Improves the quality;** Of the air/promotes a comfortable feeling
- ✔ **Purifies the air;** In enclosed areas
- ✔ **Has a positive;** Effect on your health
- ✔ **Strengthens the resistance;** Of the body against diseases
- ✔ **Inhalation allergies;** Are reduced or disappear
- ✔ **Anxiety and depression;** Can be reduced, or disappear
- ✔ **Diseases can;** Be prevented
- ✔ **Separate Stand;** Also available

## VECTOTHOR AIR TECHNICAL SPECIFICATION

<b>Energy consumption:</b>	65 Watt	<b>Ventilator:</b>	12 Volt
<b>Philips PL-L 60 W/4P HO lamp:</b>	60 Watt	<b>Max. area capacity:</b>	100 m <sup>3</sup>
<b>UV-C Dose:</b>	4.23 mj/cm <sup>2</sup> (air flow 50 m <sup>3</sup> /hr)	<b>Max. throughput:</b>	150 m <sup>3</sup> of air per hour
<b>UV-C (YI) output:</b>	19.0 Watt	<b>Dimensions:</b>	600 x 170 x 150 mm
<b>UV-C (%) after 8,000 hours:</b>	85%	<b>Recommended run time:</b>	24 hours per day
<b>Filter:</b>	3M High Air Flow Electrostatic (HAFE)	<b>Maintenance:</b>	Replace UV-C Lamp & Filter annually

## PERFORMANCE

Many 'air-purifiers' make sweeping claims that are in fact cleverly worded to deceive. They claim to purify the air to 99.9%, but reading the fine print, they are just filter systems that take out the larger particles to this level.

VECTOTHOR AIR160 is different! It can actually deliver on its promise because it uses three different high-performance technologies: Filtration, UV-C Light Disinfection and Air Ionization, to eliminate contaminants and micro-organisms.

Three high-performance air-purification methods are uniquely combined into a single high-tech unit that is suitable for smaller areas up to 300 m<sup>3</sup>.

Purifying the air you breathe is no longer a superfluous luxury. An increasing number of micro-organisms and chemical pollutants are commonly found in the air we breathe in indoor environments; including viruses, bacteria and moulds. These all make our air less healthy to breathe.

VECTOTHOR AIR160 is a compact, stand-alone system, immediately ready-for-use with simple installation and maintenance. Easy to service, stylish and effective; it's the perfect air purifying system for so many applications.



# FUMITHOR™ HYGIENE DISINFECTANT SMOKE GENERATOR

FUMITHOR HYGIENE is a highly effective and unique method for improved sterilisation, used extensively throughout Europe. It's a low toxic, dry smoke disinfectant with potent bactericidal, virucidal and fungicidal properties, the perfect hygiene solution for modern industry and society.



## FUMITHOR HYGIENE KEY FEATURES

- ✓ Uniquely uses two different active ingredients for improved results.
- ✓ A broad-spectrum microbicide, effective against all vegetative bacteria, fungi, and viruses, it is also sporicidal.
- ✓ Optimal effective use of small quantities of disinfectant which minimises any impact on the environment while maximising results.
- ✓ Disinfectant is deposited everywhere (vertical, horizontal and underside of horizontal surfaces) which ensures a more thorough treatment.
- ✓ Easy to treat inaccessible areas - roofs, false roofs, nooks and crannies, etc.
- ✓ Lower operator and worker exposure to disinfectants makes it safer.
- ✓ It does not increase the humidity of the treated rooms meaning fungal growth is not encouraged.
- ✓ Effective treatment of any enclosed area.

## FUMITHOR HYGIENE PRODUCT DETAILS

**Active Ingredients:** 35 g/kg glutaraldehyde  
200 g/kg ortho-phenylphenol

**Formulation Type:** Smoke generator

**Pests Controlled:** **Viruses** including: avian reovirus, avian rotavirus, infectious bronchitis, *Pseudorabies* virus, infectious bursal disease, avian influenza, Newcastle disease, porcine reproductive respiratory syndrome, hog cholera = HC, avian laryngotracheitis, Marek's disease virus, human Corona virus.

**Bacteria** including: *Aeromonas punctata*, *Bacillus mycoides*, *Bacillus subtilis*, *Desulfovibrio desulphuricans*, *Enterobacter aerogenes*, *Escherichia coli*, *Leuconostoc mesenteroides*, *Proteus mirabilis*, *Pseudomonas fluorescens*, *Pseudomonas aeruginosa*, *Staphylococcus aureus*, *Listeria monocytogenes*, *Mycobacterium farrae*, *Propionibacterium acnes*, *Salmonella choleraesuis*, *Bacillus cereus*, *Legionella pneumophila*, *Klebsiella aerogenes*, *Klebsiella pneumoniae*, *Desulfovibrio desulphuricans*.

**Yeasts & fungi** including: *Candida albicans*, *Candida krusei*, *Rhodotorula mucilaginosa*, *Rhodotorula rubra*, *Saccharomyces bailii*, *Saccharomyces cerevisiae*, *Torula utilis*, *Alternaria tenuis*, *Aspergillus flavus*, *Aspergillus niger*, *Aspergillus terreus*, *Aspergillus ustus*, *Chaetomium globosum*, *Mucor racemosus*, *Penicillium brevicale*, *Rhizopus stolonifer*, *Thiycophyton mentagrophytes*, *Thiycophyton rubrum*, *Stachybotrys atra*, *Penicillium funiculosum*, *Trichoderma viridae*.

**Pack Size/ Code:** 400 g generator treats 800 m³, 6 x 400 g (CHEFS1002)  
100 g generator treats 200 m³, 6 x 100 g (CHEFS1001)  
25 g generator treats 50 m³, 6 x 25 g (CHEFS1000)

## PERFORMANCE

Glutaraldehyde is an organic compound that is highly effective as a disinfectant/sterilant and widely used in medical and surgical fields. Ortho-phenylphenol is an organic compound and a powerful biocide with strong bactericidal and fungicidal properties. It is commonly used as a general surface disinfectant in households, hospitals, nursing homes, farms, laundries, barber shops, and food processing plants. Together they provide a complete solution to your needs for a germ free environment.

FUMITHOR HYGIENE is ideal for enclosed areas in ANIMAL HEALTH poultry, egg production, animal breeding facilities, kennels; PUBLIC HEALTH health institutions and premises, medical centres, clinics, surgery areas, ambulances, saunas, gyms, pools, schools, hotels, cinemas, theatres, libraries, warehouses, offices, homes; FOOD INDUSTRY bakeries, mills, slaughter houses, food processing areas, food and vegetable storage; CROP PROTECTION post-harvest, silos, warehouses, ships, greenhouses, cold stores, containers, etc...

# AVITHOR™ BIRD MANAGEMENT SYSTEMS

Bird control made simple, AVITHOR leaves buildings protected and the birds safe and unharmed.



## AVITHOR E4 DETERRENT SPIKES



Protects against most bird species in medium or high pressure areas.

Once fitted, AVITHOR DETERRENT SPIKES form a virtually invisible barrier to deter birds from landing or nesting on the fitted surfaces, while causing them no harm.

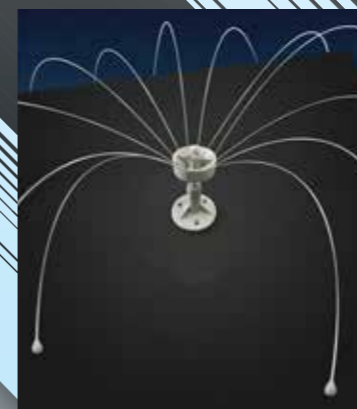


### Description

Spikes in stainless-steel / Steelinox® / Steelinox®+  
Highest-quality Stainless Steel, Spike Diameter 1.3 mm; with UV Stabilized Polycarbonate Base.  
85 mm Low Height, 125 mm High Height, 130 mm Width, 500 mm Length.  
Carton contains 120 x 500 mm runs (total 60 m), weight approx 12 kg.

AVITHOR DETERRENT SPIKES are manufactured using non-corroding materials.

## AVITHOR DADDI LONG LEGS BIRD DETERRENT SYSTEM



Protects against most large bird species in low or medium pressure areas.

The AVITHOR DADDI LONG LEGS™ Bird Deterrent is designed to prevent birds from landing in hard to protect areas. Ideal for open spaces such as flat roofs or air conditioning units, as well as other situations such as domed or pointed roof peaks, and other areas where alternatives such as spiking or netting are too difficult or not possible.

The thin, stainless steel rods rotate in the breeze and wave menacingly, interfering with birds as they attempt to land. Designed to be as discrete as possible DADDI LONG LEGS is almost invisible from a distance of 20 m or more. Being inconspicuous the DADDI LONG LEGS can be installed in high traffic or public areas with little risk of it causing offense by its appearance.

The DADDI LONG LEGS is for the safety conscious, the stainless steel rods are fitted with plastic tips to ensure no injury to birds, humans or other animals.

### Available in three sizes

1.2 m / 1.8 m / 2.4 m



# AVITHOR™ BIRD AWAY

## VISUAL & OLFACTORY BIRD REPELLENT



A totally new concept in the effective management of pest bird species.

### BIRD AWAY KEY FEATURES

- ✓ **100% natural and pesticide free;** It is discreet, non-harmful and highly effective at repelling birds from buildings and other structures.
- ✓ **Flame Shield Gel Technology™;** Reflects light as a sparkle in the UV-A light spectrum. Since birds see light in the UV-A spectrum, they see the sparkle which resembles flames. This virtual 'flame shield' visually deters the birds from landing.
- ✓ **Herbal Extracts;** The olfactory component of the gel comes into play when birds try to land. Bird Away contains herbal extracts in a natural product base. If the bird gets close, it is repelled by the strong herbal odour.
- ✓ **Non-toxic and non-harmful to birds;** Birds do not make any contact with the gel at all. It works purely by visual and olfactory cues. The gel is discreetly applied in UV-stabilised, low-profile AVITHOR Dishes for placement. It does not kill or trap birds, but immediately changes their behaviour so that they fly away. Birds will completely desert a habitat they have been using for years once it is placed.
- ✓ **Works indoors or outside;** And has been tested successfully against pigeons, common mynahs, starlings, sparrows, swallows, willie wagtails, gulls, crows and corellas; with birds deterred for up to three years or more.

### BIRD AWAY PRODUCT DETAILS

- Active Ingredients:** 30 g/kg peppermint oil, 50 g/kg white pepper.
- Insecticide Group:** Herbal
- Formulation Type:** Gel
- Pack Size/ Code:** 15 x 15 g Dishes (AVIBA1005)
- Resistance Group:** Not applicable

### PERFORMANCE

All components appear on the United States Food and Drug Administration's (FDA) lists of products that are Generally Regarded As Safe (GRAS), and are listed in the European Pharmacopoeia Standards, (Europe's legal and scientific benchmark for pharmacopoeial standards, designed to deliver high quality medicines in Europe and beyond), for direct application to, or consumption by people.



Guttering Dish



Magnetic Dish



Window-clip Dish

### AVITHOR E-TRACK



Protects against all bird species in low, medium or high pressure areas.

AVITHOR E-TRACK has changed the face of the bird control industry. One product is able to protect a wide variety of surfaces from all bird species, while at the same time being virtually invisible, and incredibly durable.

E-Track protects straight ledges, and curves to easily to protect sign letters. Jumpers snap quickly to the track, making it easy to power multiple tracks. A solar charger unit mounts to the building and sends intermittent power down the two conductors.

Quick connectors are used every 16 m, or wherever else connections are needed. Corner Quick Connectors make 90 degree angles a snap.

AVITHOR E-TRACK comes in a range of colours in 15 m rolls. A full range of accessories are also provided.



### AVITHOR EAGLE EYE



Protects against most bird species in low to medium pressure areas in combination with other bird management systems.

The AVITHOR EAGLE EYE bird scarer uses reflected light beams that flash at various angles from the rotating EAGLE EYE units to disorientate and irritate the birds.

The EAGLE EYE is fitted with a 12 V DC motor to make it turn at a specific speed, reflecting the light beams at constant intervals.

The EAGLE EYE functions optimally in direct sunlight. Artificial light can be used for indoor application or shady areas but is not as effective as direct sunlight and more units will be needed to cover the same area.

The reflective surface of the EAGLE EYE is manufactured from durable ABS plastics and will not break even during hailstorms. Animal welfare institutions are in favour of the EAGLE EYE because it is not harmful to any animals or the environment.



**The AVITHOR PRO-PELLOR Unit complements and enhances the effectiveness of EAGLE EYE.**

The PRO-PELLOR was designed to provide a durable, cost effective, reflective unit to complement the EAGLE EYE system. The PRO-PELLOR rotates by means of it's double bearing system and the wings have been designed to rotate with the slightest of breeze. The PRO-PELLOR is totally wind-driven and no power is needed.

The wings are made out of aluminium and the mounting bracket is 304-grade stainless steel.

This ensures longevity, even in coastal environments. The unit requires servicing every 4 months to ensure optimal reflections. The PRO PELLER carries a 2 year guarantee.

**It is available in two colour variants: Silver and Gold for land birds, or Red and Gold for marine birds.**

The PRO-PELLOR is intended to be used in conjunction with the EAGLE EYE system. Each PRO-PELLOR has an effective radius of 15 m. Place one unit every 30 m in large open areas.

Always place the units in direct sunlight and in areas with a light breeze. Place the EAGLE EYE units on the highest points of the building and near the key problem areas. The PRO-PELLOR is intended to be used in conjunction with the EAGLE EYE system every 30 m between the EAGLE EYE units.



\* CONDITIONS APPLY.



# AVITHOR CABLE BIRD™

A SPRING-TENSIONED WIRE SYSTEM DESIGNED TO CREATE AN UNSTABLE LANDING AREA. VERY LOW-PROFILE MAKES IT THE MOST DISCREET OF ALL BIRD PROTECTION SYSTEMS.



AVITHOR CABLE BIRD is one of the least visible of all ledge products and is highly-recommended for use on high-visibility ledges where aesthetics are important and for the protection of historical buildings and solar panels.

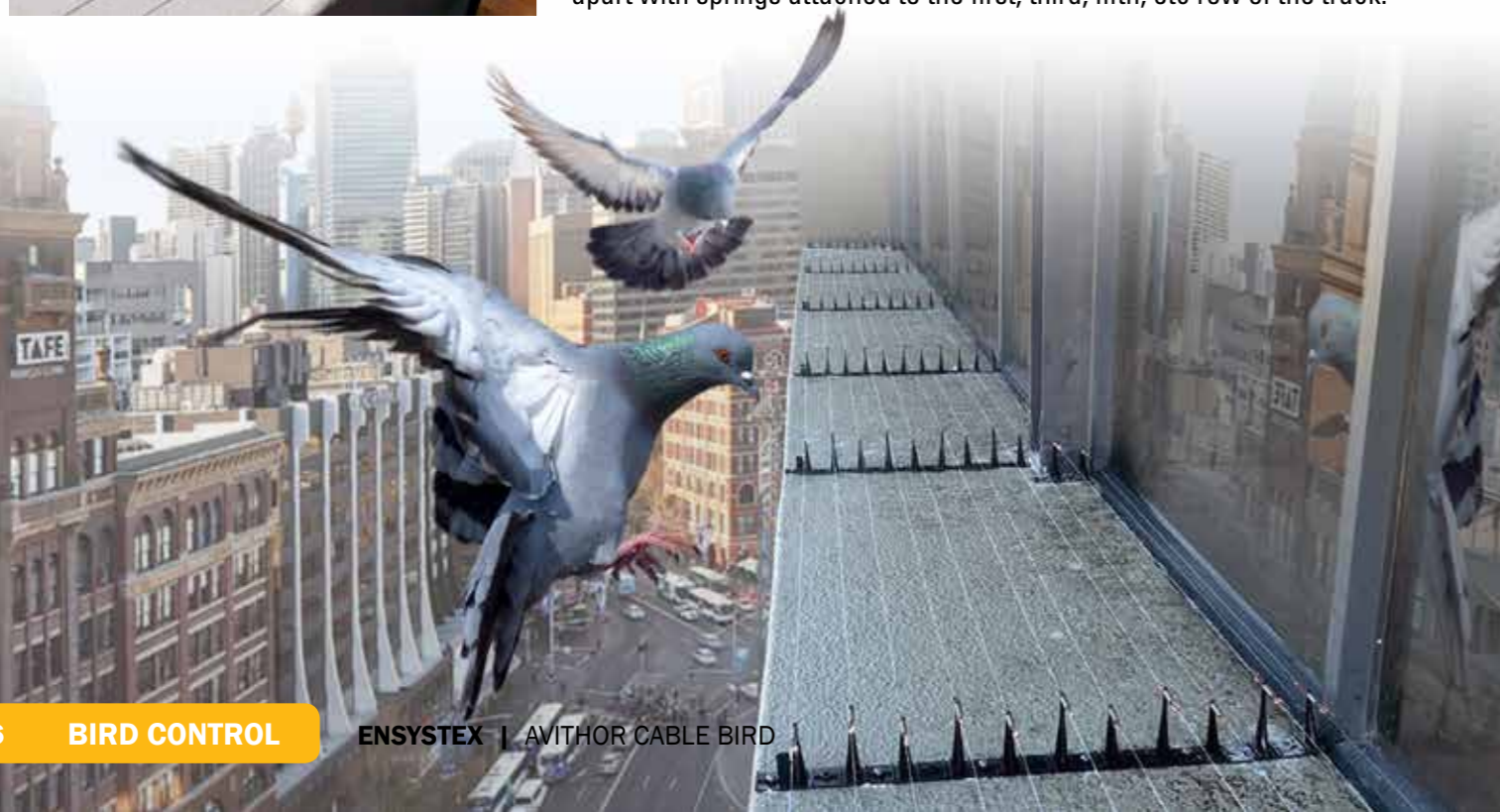
**USES:** Solar panels, exposed ledges, parapets, signs, beams, pipes.

**BIRD PRESSURE:** Light - Medium

**MATERIAL:** CABLE BIRD TRACK - UV stabilised high-durability polypropylene. SKY WIRE™ - Stainless steel, nylon coated wire.

**INSTALLATION:** The SKY WIRE is attached to the CABLE BIRD TRACK and tensioned with CABLE BIRD TENSION SPRINGS.

**HOW IT WORKS:** The CABLE BIRD system consists of one-piece tracks with 9 posts that can be cut to the desired width (3 posts/wires, 5 posts/wires, etc.) It is made from durable polypropylene and can be installed using either adhesive or screws. The tracks are placed 1.5 m apart with springs attached to the first, third, fifth, etc row of the track.



[www.ensystex.com.au/Nara1.html](http://www.ensystex.com.au/Nara1.html)

## GORILLA RODENT TRAPS AND NARA LURES

WORLD'S TOUGHEST AND MOST HUMANE TRAPS WITH ALLERGEN-FREE MONITOR FOR RATS AND MICE

Many food standards prohibit the use of anticoagulants for monitoring purposes. Most common baits are prone to mould formation in damp areas. NARA Lures solve these problems and Gorilla traps with CE certification provide a unique humane control solution.

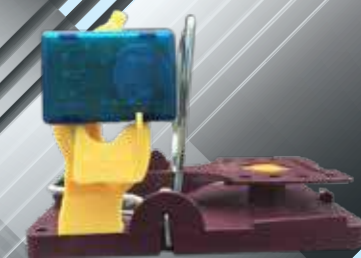


### GORILLA RODENT TRAPS AND NARA LURES KEY FEATURES

- ✔ **Strongest mouse traps;** Bait socket made especially for NARA® Lures. High quality springs delivering most humane capture of mice.
- ✔ **Traps fit most stations;** Place traps stand alone or in a RODENTHOR Station.
- ✔ **Most humane rat trap;** Strongest springs available for humane kill of rats. Compliant with BANANA adapter for eMitter BEEP. Bait socket made especially for NARA® Lures.
- ✔ **NARA Lures;** are designed to fit into the Gorilla Traps. No other beats NARA Lure from 3 months up to 12 months long lasting efficacy in a variety of different aromas your professional aid for long-term performance. Professionals now rely upon NARA Lure is the most hygienic and long-lasting way to bait traps. No cleaning up afterwards and no fast decrease of efficient monitoring with up to 12 months of non-stop activity.
- ✔ **eMitter BEEP;** Pest control often requires traps to be placed in difficult to reach rodent harbourages that are costly to inspect and the client needs instant notification of a rodent capture. One easy answer is the eMitter BEEP. A super simple but highly reliable and effective audio warning sounds when a rodent trap has potentially caught a rodent.

### GORILLA RODENT TRAPS AND NARA PRODUCT DETAILS

Gorilla Trap - Rat	RDTF1011
Gorilla Trap - Mouse	RDTF1012
NARA Lure Fish	RDTF1002
NARA Lure Meat	RDTF1003
NARA Lure Vanilla	RDTF1004
NARA Lure Chocolate	RDTF1005
eMitter BEEP	RDTF1013



eMitter BEEP on GORILLA TRAP

### PERFORMANCE

The safest most effective options for the food industry.



# NARA BLOCKS

## THE FIRST ALLERGEN FREE, NON-TOXIC RODENT MONITOR

Allergen-management has become a major topic in many food product companies. NARA is especially designed for this specific purpose. Regulations as well as many food standards now prohibit the use of anticoagulants for monitoring purposes.

Only after the determination of rodent activity anticoagulants may be used subject to stringent restrictions. Food-based monitoring blocks have a critical disadvantage as they serve as food for rodents, helping them to survive and increase the risk of rising reproduction. Moreover, most are prone to mould formation in damp areas. In other areas they are often infested by non-target organisms, e.g. flour beetles, cockroaches, ants and snails.

### NARA BLOCKS KEY FEATURES

- ✓ **Identify the species;** With NARA Bloc you can tell by the visible bite marks in the material what species are present.
- ✓ **Lasts 3 to 12 months in any environment;** Indoors and outdoors and therefore beats the features of any organic monitor.
- ✓ **The go-to solution for food or pharma sites;** But also for any outdoor environment, in which rodenticide monitoring is a concern due to secondary poisoning, restrictions by regulations or standards.
- ✓ **The worlds biggest wildlife sanctuaries;** Rely upon NARA for professional monitoring in the toughest rain forest conditions.

### NARA BLOCKS PRODUCT DETAILS

NARA Bloc Fish	RDTF1006
NARA Bloc Meat	RDTF1007
NARA Bloc Vanilla	RDTF1008
NARA Bloc Chocolate	RDTF1009

### PERFORMANCE

The safest most effective options for the food industry.

# NARA SPRAY

## ATTRACTIVE SPRAY-MONITORING FOR RATS AND MICE

Spray NARA Spray onto your stations and lay a trail towards them in order to improve your results.



### NARA SPRAY KEY FEATURES

- ✓ **Supports non-toxic monitoring;** By allowing you to leave a trail to lure rodents to traps and mask the smell of plastic stations.
- ✓ **Highly attractive;** For all commensal rodents.
- ✓ **Beneficial monitor;** Can be used to spray any station to mask smells of plastic or human odours and make the stations more attractive.
- ✓ **With handy holster and belt;** So you can always have it with you when doing rodent work.

### NARA SPRAY PRODUCT DETAILS

NARA Spray Meat flavour aerosol	500 g (RDTF1001)
NARA Spray Chocolate flavour aerosol	500 g (RDTF1002)

### PERFORMANCE

Rodent stations and traps are made of plastic. Plastic has its own chemical smell. If you hold a lighter to anything plastic it smells extremely toxic. This can be compared to what rodents smell when entering a rodent station. Rodents sense of smell is many times better than humans.

NARA Spray seals away the plastic smell, making stations attractive to rodents. The scent lasts around 2-3 months and needs to be renewed, but after repeated application it will slowly soak into stations. Renewing the scent every few months adds fresh attraction to stations luring in new generations of pests.

NARA Spray can also be used to spray a bait-line towards stations, to lure rodents from the bushes or holes into the station. The theory comes from hunting, where hunters drag a dead rabbit to a trap to catch foxes. Scientific trials showed that rodents are curious and follow the smell over large distances, even up to 40 m, with their sensitive noses - like an irresistible cookie trail.

The spray is not only an aroma scent, but it also feeds them with a nutritious vegetable oil, so they feel the desire for more. It consists of 100% vegetable rapeseed oil which is super nutritious for rats and mice and has its own natural scent that is refined with an added meat/beef aroma mixture.

### Secure Gel Pads

Secure Stations quickly, but also remove them without damage if necessary. Clients and auditors see them as a hygienic to alternative.

Reusable up to 50 times - Leave no residue or stains - Best for insect monitors or bait boxes - IFS and AIB approved - For permanent or temporary control points - Sticks to most surfaces - Holds up to 1.5 kg





# MUSKIL® DUAL ACTIVE RODENTICIDE BLOCKS **FLUO-NP™**

UV TRACKING TECHNOLOGY

## A GENERATIONAL BREAKTHROUGH IN RODENTICIDE TECHNOLOGY KILLS RATS AND MICE FASTER THAN OTHER RODENTICIDES

First rodenticide to include fluorescent tracking with palatability optimised to the the rodent's senses of sight, smell and taste.

### MUSKIL BLOCK KEY FEATURES

- ✓ **Two actives;** MUSKIL blends two different Second Generation Anticoagulant Rodenticides (SGARs), difenacoum and bromadiolone, together to create a rodenticide that outperforms any other product in the market in terms of speed of kill and reduced risk to pets.
- ✓ **MUSKIL has also been uniquely formulated;** To provide improved palatability. And MUSKIL's FLUO-NP Technology helps overcome Bait Shyness and allows you to track rodents and bait consumption for improved monitoring and higher standards of safety in HACCP managed food establishments.
- ✓ **Power from synergy;** By combining two actives we create a unique product that kills the toughest rodents, including those resistant to other anti-coagulant rodenticides.

The two actives combine together to create a synergistic effect with each dynamically intensifying the effects of the other, to create a more potent solution than either alone, yet at the same time achieving reduced risk to people and pets.

- ✓ **Cost Effective;** MUSKIL kills rodents faster, so often less bait is consumed, which helps reduce the costs of your management programs. Plus the neophobic response to MUSKIL is much lower than with traditional baits using standard dyes, therefore bait is accepted more quickly, more palatable and more efficient in use.

- ✓ **FLUO-NP Technology;** is an abbreviation of Fluorescent No Phobia. The No Phobia aspect is in reference to how MUSKIL overcomes the rodent's natural neophobia, which relates to the commonly observed behaviour of bait shyness, where rodents are reticent to feed on a bait. Numerous field trials and commercial results have proven that MUSKIL can defeat bait shyness.

### MUSKIL BLOCK PRODUCT DETAILS

**Active Ingredients:** 0.025 g/kg bromadiolone, 0.025 g/kg difenacoum  
**Pesticide Group:** Hydroxycoumarins  
**Formulation Type:** All weather block  
**Pests Controlled:** Rats and mice  
**Pack Size/ Code:** 8 kg (RDTB1031), 3 kg (RDTB1032)

### PERFORMANCE

The FLUO-NP contributes to the primary bait acceptance of MUSKIL, thereafter, the formulated ingredients enhance the palatability. MUSKIL has been prepared specifically for Australian and Asian markets and provides improved palatability for our local rats and mice, especially the black rat (*Rattus rattus*). MUSKIL employs high quality aromatic ingredients to entice rodents to the bait coupled with high grade proteins to ensure optimal feeding. All rodenticides have added colour dyes to deter feeding by birds and other animals with full colour vision. However all the usual dyes used in rodent baits can be detected by rodents and do slightly deter feeding. University trials have shown that the FLUO-NP dyes used in MUSKIL are non-detectable to rodents providing for further improvements in palatability.

# MUSKIL® SOFT BAIT WITH TWO ACTIVES RODENTICIDE **FLUO-NP™**

UV TRACKING TECHNOLOGY

## FASTER KILL – SUPER POTENT – KILLS RATS AND MICE FASTER THAN OTHER RODENTICIDES

Higher moisture content creates increased palatability.

### MUSKIL SOFT BAIT KEY FEATURES

- ✓ **Two actives;** MUSKIL blends two different Second Generation Anticoagulant Rodenticides (SGARs), difenacoum and bromadiolone, together to create a rodenticide that outperforms any other product in the market in terms of speed of kill and reduced risk to pets.
- ✓ **MUSKIL has also been uniquely formulated;** An economical and extremely potent 10 g moist pasta bait, produced to be more palatable than block baits - killing rodents faster.
- ✓ **Premium palatability;** Porous teabag sachet allows the release of aromatics to lure rodents effectively. Combines vegetable fats, grains and proteins in a way that is exceptionally attractive to rats and mice. Much lower neophobic response than traditional baits ensures fast acceptance of MUSKIL SOFT BAIT.
- ✓ **Power from synergy;** By combining two actives we create a unique product that kills the toughest rodents, including those resistant to other anti-coagulant rodenticides. The two actives combine together to create a synergistic effect with each dynamically intensifying the effects of the other, to create a more potent solution than either alone, yet at the same time achieving reduced risk to people and pets.
- ✓ **Cost Effective;** Small 10 g sachets help reduce the costs of your management programs, allowing up to twice as many bait placements as other products. One sachet is enough to kill up to five rats. Sachets can be placed on rods in a bait station.
- ✓ **FLUO-NP Technology;** is an abbreviation of Fluorescent No Phobia. The No Phobia aspect is in reference to how MUSKIL overcomes the rodent's natural neophobia, which relates to the commonly observed behaviour of bait shyness, where rodents are reticent to feed on a bait. Numerous field trials and commercial results have proven that MUSKIL can defeat bait shyness.

### MUSKIL BLOCK PRODUCT DETAILS

**Active Ingredients:** 0.025 g/kg bromadiolone, 0.025 g/kg difenacoum  
**Pesticide Group:** Hydroxycoumarins  
**Formulation Type:** Soft pasta bait in 10 g edible sachet  
**Pests Controlled:** Rats and mice  
**Pack Size/ Code:** 9 kg (RDTB1036), 3 kg (RDTB1037)

### PERFORMANCE

The MUSKIL recipe uses high quality aromatic ingredients to entice rodents to the bait coupled with high grade proteins to ensure optimal feeding. This fast-acting, moist pasta-based bait is irresistible to rodents. A single edible sachets allows the release of the carefully selected aromas which draw rodents to the bait. They then readily feed on the high protein bait which provides both a high quality food source, and moisture.

Our 9 kg bucket contains 900 sachets. MUSKIL SOFT BAIT is the obvious choice for fast, cost-effective rodent control.

One of the most remarkable attributes of MUSKIL is that whilst displaying faster kill of rodents, it displays a lower toxicology profile against non-target animals including family pets, when compared to most other rodenticide baits.

\*Registered trademark of Zapi S.p.A., Italy



**FLUO-NP TRICKS RODENTS TO DEFEAT BAIT SHYNESS**



# RODENTHOR<sup>®</sup> BLOCK RODENTICIDE

## A TRUE SINGLE FEED RODENTICIDE

For use in all situations, against all species of rats & mice.

### RODENTHOR BLOCK RODENTICIDE KEY FEATURES

- ✓ **Ready to use block bait;** Suitable for use in damp or dry situations in and around industrial, commercial, public services, agricultural and domestic buildings.
- ✓ **Works in the toughest situations;** Controls rodents resistant to other anticoagulants, including warfarin, coumatetralyl and bromadiolone.
- ✓ **Clever design;** The block has been designed with a central hole for easy mounting in various situations and several sharp corners to increase its attractiveness to rodents by providing numerous gnawing edges.
- ✓ **Economical block size;** The 15 g block allows more placements, reduces wastage and provides for more effective control of rats and mice.
- ✓ **Irresistible to mice and rats;** This highly palatable extruded block uses the highest quality ingredients to ensure it is irresistible to rats and mice.

### RODENTHOR BLOCK RODENTICIDE PRODUCT DETAILS

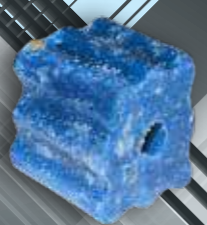
**Active Ingredient:** 0.05 g/kg brodifacoum  
**Pesticide Group:** Hydroxycoumarin  
**Formulation Type:** All weather block  
**Pests Controlled:** Rats and mice  
**Pack Size/ Code:** 8 kg (RDTB1007), 3 kg (RDTB1008)

### PERFORMANCE

RODENTHOR BLOCK RODENTICIDE is a tough, efficient eliminator of rats and mice. The extruded block has effective weather resistance to make it survive in most environments. One feed is all that is required to kill a rodent. The 15 g block uses the most potent rodenticide on the market, brodifacoum, and is optimised to tackle rodents without using excessive bait, so your purchase goes further.

Nails or wire may be used to fix blocks to prevent them being removed by rodents.

Alternatively use RODENTHOR Block Rodenticide in the Ensystex RODENTHOR Bait Stations such as the PETI, ALPHA, BETA or PILOT Stations to enhance effectiveness.



# RODENTHOR<sup>®</sup> SOFT BAIT

## FATAL ATTRACTION

Irresistible to rodents, and a single feed is lethal to every rodent, every time.

### RODENTHOR SOFT BAIT KEY FEATURES

- ✓ **Made from the finest ingredients;** RODENTHOR's soft pasta base is by far the most palatable bait presentation for rodents.
- ✓ **Each 15 g sachet is enough to kill a rat;** Whilst ensuring your purchase goes further.
- ✓ **Attractive;** The edible sachets allow the release of the carefully selected aromas which draw rodents to the bait. They then readily feed on the high protein, moist pasta-based bait which provides both a high quality food source, and moisture.

### RODENTHOR SOFT BAIT PRODUCT DETAILS

**Active Ingredient:** 0.05 g/kg brodifacoum  
**Pesticide Group:** Hydroxycoumarin  
**Formulation Type:** Soft paste bait in an edible sachet  
**Pests Controlled:** Rats and mice  
**Pack Size/ Code:** 9 kg (RDTB1009), 3 kg (RDTB1010)

### PERFORMANCE

RODENTHOR Soft Bait is a tough, efficient eliminator of rats and mice. One feed is all that is required to kill a rodent. The 15 g bait uses the most potent rodenticide on the market, brodifacoum, and is optimised to tackle rodents without using excessive bait, so your purchase goes further. Due to it being the most palatable bait formulation on the market, this should always be considered as your first choice for rodent baiting programs, especially at difficult sites.





# RODENTHOR<sup>®</sup> MONITOR BLOCKS FLUO-NP<sup>™</sup>

UV TRACKING TECHNOLOGY

## A PROFESSIONAL APPROACH TO RODENT MANAGEMENT



### RODENTHOR MONITOR BLOCKS OVERVIEW

RODENTHOR Monitor Blocks with FLUO-NP Technology are 15 g non-toxic, extruded block baits containing our unique FLUO-NP Technology, a food-grade additive that makes rodent droppings glow bright yellow when a UV tracking light is shone on them. RODENTHOR Monitor Blocks are used for monitoring rodent activity in sensitive areas or for use as part of a routine rodent management program.

They are formulated like our MUSKIL<sup>®</sup> Dual Active Rodenticide, which offers numerous benefits to your rodent management programs. In addition to allowing you to better monitor rodent activity, this means you can ensure the rodents will readily change to feeding on MUSKIL once you have detected activity.

### RODENTHOR MONITOR BLOCKS KEY FEATURES

- ✓ **Essential;** In the increasingly professional world of rodent management, this is an essential tool for professional pest managers. Particularly since there is ever increasing pressure to minimise the use of second generation anti-coagulant rodenticides (SGARs) in the environment.
- ✓ **Highly attractive;** Made of the same highly attractive food sources used for MUSKIL DUAL ACTIVE RODENT BLOCKS, RODENTHOR Monitor Blocks allow feeding to commence before the toxic bait blocks are provided.
- ✓ **RODENTHOR Monitor Blocks with FLUO-NP Technology** provide for traceability of ingested bait allowing for tracking of rodent movements and runs. This is because the non toxic FLUO-NP dye is excreted into the rodent's droppings. So when you shine a UV Tracking Light onto the droppings, they will glow yellow.
- ✓ **Sensitive;** They are ideal for monitoring rodent activity in sensitive areas, in food industries, schools, hospitals and in any place where, according to HACCP and IPM (Integrated Pest Management), the use of poisonous baits must be reduced or avoided. It is still always advisable to protect bait points from non-target animals and from water using Ensystex's RODENTHOR Bait Stations. This will also ensure improved feeding since the stations provide a safe haven for the rodents.
- ✓ **Pre-feed program;** Once you detect rodent feeding on the Monitor Blocks, you simply place your MUSKIL Blocks in the same Stations to ensure elimination. Since MUSKIL Blocks use a dye that glows red under a UV light, you can also easily distinguish between rodents feeding on the MUSKIL and those feeding on the Monitor Blocks.
- ✓ **Safe for damp areas;** RODENTHOR Monitor Blocks with FLUO-NP Technology retain their attractiveness to rats and mice in damp locations and are enriched with highly palatable ingredients for rodents. Thanks to their hole in the middle, they can be fixed in manholes above the water level, while their irregular and sharp-cornered form increases palatability. They can also be easily secured on the rods of bait stations.

### RODENTHOR MONITOR BLOCKS PRODUCT DETAILS

**Active Ingredient:** None  
**Formulation Type:** Ready to use food source  
**Pests Controlled:** Rats and mice  
**Pack Size/ Code:** 5 kg pail (RDTB2002)

# RODENTHOR<sup>®</sup> RAT OUT

## RODENT REPELLENT

A new innovation, RODENTHOR<sup>™</sup> RAT OUT naturally repels rodents allowing exclusion jobs to be done on the spot, and trapping and baiting programs to be improved.



### RODENTHOR RAT OUT OVERVIEW

RODENTHOR RAT OUT gives you a new weapon in your arsenal of rodent control options. RAT OUT acts as a blocking or redirection agent so that rodents will be prevented from using that particular path of travel.

### RODENTHOR RAT OUT KEY FEATURES

- ✓ **Two deterrents;** Garlic oil for smell and white pepper for touch. Most rodents avoid the product just based on the smell, but rodents that do come into contact feel an uncomfortable warmth on their sensitive areas (feet, face, etc.).
- ✓ **Recurring revenue;** RAT OUT is a temporary solution so you can generate recurring revenue from exclusion; an industry first.
- ✓ **Herds;** Trapping and baiting programs can be improved by using RAT OUT to 'herd' the rodents towards them.
- ✓ **Electrically compatible;** Sensitive equipment, electrical wiring, cabinets and retail gondolas can be protected with RAT OUT.
- ✓ **Immediate;** RAT OUT allows you to do exclusion work on the first visit.
- ✓ **Inexpensive;** RAT OUT is also the ideal solution where clients cannot afford a full proofing program.

### RODENTHOR RAT OUT PRODUCT DETAILS

**Active Ingredients:** 5.71 g/kg garlic oil, 3.43 g/kg white pepper  
**Pesticide Group:** Natural food ingredients  
**Formulation Type:** Ready to use gel  
**Pests Controlled:** Rats and mice  
**Pack Size/ Code:** 4 x 30 g tubes (RDTR1000)

### PERFORMANCE

All trials showed high efficacy for RODENTHOR RAT OUT with no rats penetrating past the deterrent spots in any of the trials, regardless of whether the material was freshly produced, or after accelerated storage at 54° C for 14 days. RAT OUT is clearly highly effective and stable for at least two years as determined by the results after accelerated aging. RODENTHOR RAT OUT to the rescue in commercial, industrial & residential premises.



# RODENTHOR<sup>®</sup>

## RAT AND MOUSE STATIONS



### BORA STATION

#### High-domed Stations is perfect when using traps for rats.

This Station is ideally suited for use with our high-power, humane Gorilla Traps and features a child-resistant, double lock system, two horizontal wires to hold the bait, two inner trays, key and a wall adapter. Made of sturdy polypropylene.

Dimensions: 155 x 255 x 325 mm



### BETA RODENT STATION

#### Compact Station for Rats and Mice

Our most popular model with child-resistant features, double lock system, steel rod and a removable tray for easy cleaning. This station also comes with a wall mounting bracket kit.

Dimensions: 230 x 190 x 95 mm

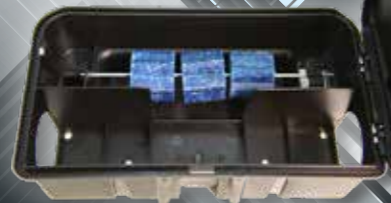


### CORAL STATION

#### Ultra Compact Station for Rats and Mice

Very cost effective, durable, versatile and ultra compact to fit just about anywhere. The side opening lid offers greater installation flexibility and single locking mechanism provides ease of operation. Comes with steel rod, wall mounting bracket kit and removable tray for easy cleaning.

Dimensions: 230 x 125 x 75 mm



### NEPTUNO RODENT STATION

#### Versatile Mid-size Station for Rats and Mice

A truly multi-purpose station for use in many different configurations. Available with feeding trays, vertical and horizontal feeding rods for bait, water container, large snap trap and more.

Dimensions: 235 x 185 x 90 mm



### PETI MOUSE STATION

#### Compact Station for Mice

Highly durable mouse station capable of housing 2 blocks or soft bait sachets with single key lock for safety.

Dimensions: 125 x 100 x 40 mm



### ALPHA RODENT STATION

#### Tunnel Bait Station

Sturdy, long lasting station is suitable for both rats and mice and is a cost-effective professional and long-lasting alternative to cardboard rodent boxes. Ideal for placement in roof voids, behind large appliances, etc. Comes fitted with bait rod holder and single key locking system. Rats in particular like to 'run-through' stations of this nature since they can clearly see the exit.

Dimensions: 240 x 105 x 95 mm





## PILOT RODENT STATION

### Our Largest Rodent Station

This large size station comes with all the trimmings you expect of a premium station. Features include an optional secure wall mounting bracket, horizontal bait rods, vertical posts to hold even more bait, a removable tray for easy cleaning or to hold liquid bait and a spring-loaded dual lock system. Designed to be positioned along walls or fit snugly into corners. It comes with 2 lid options, black or translucent (see-through).

Dimensions: 350 x 275 x 95 mm



## ERIS MOUSE STATION

### SECURE Mouse Station

This is a small, discreet, water-proof, Station with same secure locking system as our other Stations that comes together with our patented security wall mount adaptor.

Rodenticide blocks can be secured vertically with the lid opening laterally for easier servicing.

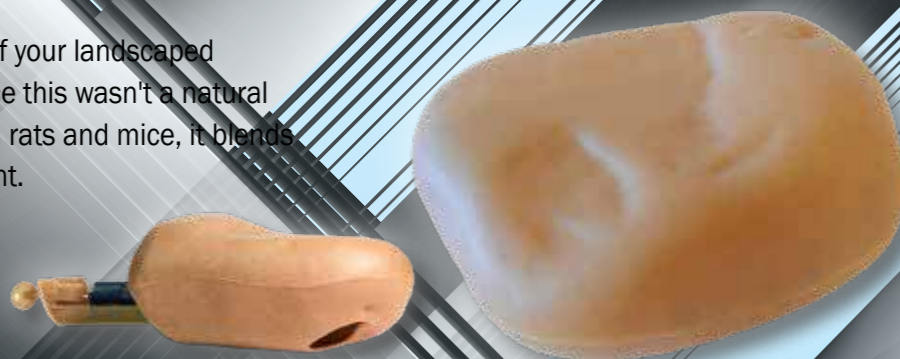
Dimensions: 173 x 69 x 52 mm



## ROCK STATION

### Rock Station

Placed around the perimeter of your landscaped gardens, you might never notice this wasn't a natural rock. Designed for baiting both rats and mice, it blends in with the outdoor environment.

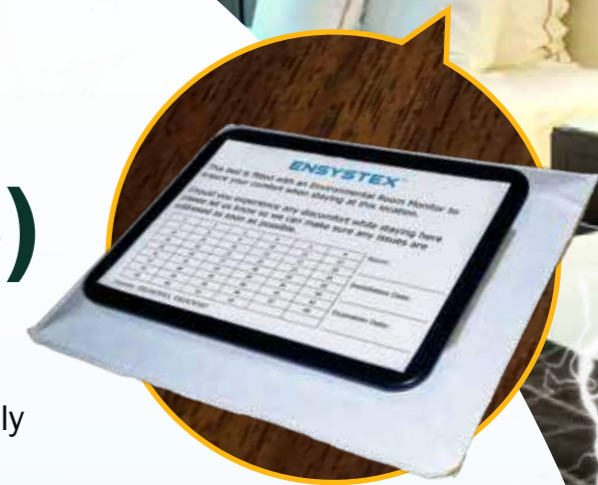


[www.ensystex.com.au/envroom.html](http://www.ensystex.com.au/envroom.html)

# ENVIRONMENTAL ROOM MONITORING SYSTEM (ERMS)

## EARLY DETECTION OF BED BUGS

Keeps guests safe from bed bugs – Environmentally Sensitive – Cost Effective – Simple



### ERMS KEY FEATURES

- ✓ **Early Detection Guaranteed;** Smaller infestations are easier to eradicate, meaning room closure times are reduced to hours instead of weeks - enhancing operational efficiency while protecting a hotel's reputation.
- ✓ **Better Protection;** ERMS ensures fewer guest complaints as infestations are usually detected before they develop. Importantly, ERMS reduces the risk that anyone could take a bed bug issue home with them.
- ✓ **Science in Action;** The system has been developed from a field based scientific approach to bed bug issues and acts as an Integrated Pest Management System in its own right, passing numerous Environmental Health inspections as a valid due diligence defence. In fact, it is also used by professionals to measure the effectiveness of bed bug management programs.
- ✓ **CIMETHOR Bed Bug Blue;** can be used with ERMS to confirm the identification of bed bug faecal spots. This simple analytical test kit can be used on the spot to confirm the identification of bed bugs spots ensuring there is no misdiagnosis.



### ERMS PRODUCT DETAILS

- Active Ingredient:** Passive harbourage using no chemicals
- Pesticide Managed:** Common bed bug *Cimex lectularius* Linnaeus and the tropical bed bug *Cimex hemipterus* Fabricius
- Size/ Code:** The monitor is approximately 120 x 90 mm and less than 10 mm deep. It has a self-adhesive backing and is simply placed at the head end of the base of each bed. Placed discreetly, the exact positioning depends on the design of the bed and is advised upon by site inspection.  
Pack x 12 (ERMS1001)

### PERFORMANCE

The ENSYSTEX ENVIRONMENTAL ROOM MONITORING SYSTEM (ERMS) has been uniquely developed as a 100% green solution to help combat the threat of bed bugs. It is discreetly placed to be checked by hotel staff on a weekly basis to provide a more complete/regular monitoring system that helps you catch bed bugs before they become a serious problem.

At the heart of the system is a very simple yet effective device – the Passive Bed Bug Monitor. To a bed bug, the monitor provides the ideal living accommodation for it to hide in and digest its meal. The monitor is designed in such a way that bed bugs are encouraged to defecate before they enter the monitor, thus providing evidence of an infestation, enabling early detection. Once a week housekeeping checks the monitor for signs of bed bug activity. It takes only a few seconds of their time.





# VECTOTHOR™ LIGHT TRAPS

## FLY CONTROL RANGE

VECTOTHOR delivers European design excellence in combination with university proven performance benefits to create the most effective flying insect management system on the market.

Leading edge solutions that guarantee the highest catch rates make VECTOTHOR Flying Insect Killer Light Traps the premium choice for HACCP food management programs, the hospitality industry, hospitals, indeed for anyone who wants peak performance in their flying insect management program.

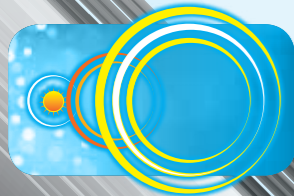
### ASTRON UV-A LAMPS - EUROPEAN MADE PRECISION



With the UV-A light output optimised to perfectly match the house fly's vision spectrum, ASTRON lamps guarantee you catch more flies more quickly.

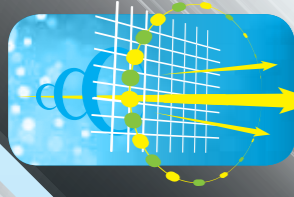
- \* CE-Approved.
- \* acc. IEC 60.335-259 International Standard for Insect Exterminators through TUV-Rheinland.
- \* Compliant with RoHS Standards (Removal of Hazardous Substances).
- \* Approved for use in HACCP (Hazard Analysis at Critical Control Points) Approved Food facilities.
- \* Shatter-proof coating from DuPont.

### NATURAL UV-A SUNLIGHT TECHNOLOGY™



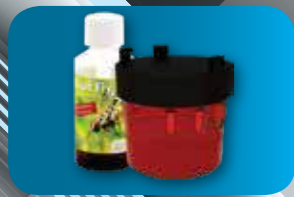
VECTOTHOR uses an electronic ballast at 10,000 cycles per second so the lamp is indistinguishable from natural sunlight, thus providing greater attraction. Other lamps feature a mechanical starter and ballast that operates at 50 cycles per second. This means flies see the UV-A light as a rapidly flickering light which is unlike natural sunlight.

### NATURAL CONTRAST GRID™



This provides 30% improved performance over conventional units since it reflects light onto the landing spot thereby stimulating the natural landing behaviour of flying insects.

### OPTIONAL FRUIT FLY LURE

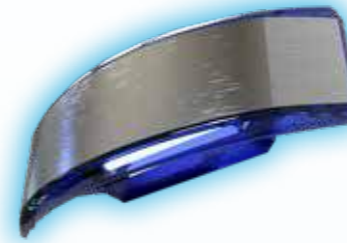


Designed to control *Drosophila melanogaster*, the common fruit fly or vinegar fly this targeted scent system can be used to provide additional attractive power for this difficult species. It is designed for use with the SPARROWHAWK, but it also fits all VECTOTHOR models. Drawn by the scent, they enter into the trap, from which escape is not possible.

### KITE

Recommended for use in homes, offices, shops and restaurants.

30% improved performance over conventional units due to its unique design, which reflects the light onto the landing spot thereby stimulating the landing behavior of flying insects. Product code: (VECL2018)



Area coverage:	35+ m <sup>2</sup>
Light source:	1 x 18 W RoHS PL ASTRON UV-A lamp
Catch type:	Temperature optimised glue board
Lamp life time:	9,000 hrs
Protection rating:	IP 20 (dust proof)
Dimensions (LxWxD):	420 x 136 x 136 mm
Mounting position:	Wall mounted

### FALCON

Recommended for use in homes, offices, shops and restaurants.

The FALCON is constructed in such a way that the UV-A light is directed upwards. The FALCON has an all metal housing and uses a powerful UV-A lamp to lure insects into its trap. Product code: (VECL1015)



Area coverage:	35 m <sup>2</sup>
Light source:	1 x 18 W ASTRON PL UV-A lamp
Catch type:	Temperature Optimised glue board
Lamp life time:	9,000 hrs
Protection rating:	IP 20 (dust proof)
Dimensions (LxWxD):	440 x 190 x 200 mm
Mounting position:	Wall mounted

### OSPREY

Recommended for use in shops and restaurants and dry industrial environments.

The unit can be wall mounted; The separate mounting strip offers easy maintenance & service. The OSPREY has a housing made of durable ABS plastic and white powder coated steel. Product code: (VECL1016)



Area coverage:	50 - 80 m <sup>2</sup>
Light source:	2 x 15 W shatterproof ASTRON UV-A lamps
Catch type:	By means of Temperature Optimised glue board
Lamp life time:	17,500 hrs
Protection rating:	IP 20 (dust proof)
Dimensions (LxWxD):	470 x 325 x 100 mm
Mounting position:	Wall mounted

### HARRIER / SEA HARRIER

Recommended for use in professional or industrial environments.

The HARRIER can be flag mounted on the wall or ceiling mounted. Mounting is a breeze with the snap-on mounting bracket. The HARRIER has an aluminium housing, which makes the unit both light and strong. Product code: (VECL1018)



Area coverage:	100 - 150 m <sup>2</sup>
Light source:	4 x 15 W shatterproof ASTRON UV-A lamps
Catch type:	Temperature Optimised centrally located glue board
Lamp life time:	17,500 hrs
Protection rating:	HARRIER IP 21 (drip proof) / SEA HARRIER IP 65 (dust proof)
Dimensions (LxWxD):	500 x 340 x 160 mm
Mounting position:	Wall, flag or ceiling mounted



## SEA EAGLE 150 EX

Recommended for use in areas with a potential danger of a gas or dust explosion.

The SEA EAGLE 150 EX is hose-proof and explosion proof IP rating of 68 and specially designed stainless steel front grid which optimises the attraction potential. The unit can be wall mounted in situations where there is risk of explosion. Product code: (VECL1013)



Area coverage:	100 - 150 m <sup>2</sup>
Light source:	2 x 18 Watt shatterproof Philips Longlife UV-A lamps
Catch type:	Temperature Optimised glue board
Lamp life time:	17,500 hrs
Protection rating:	IP 68 (hose proof/explosion proof)
Dimensions (LxWxD):	940 x 600 x 140 mm
Mounting position:	Wall mounted

## SPARROWHAWK

The innovative design of the VECTOTHOR SPARROWHAWK allows it to be mounted square on the wall or on a table-top or a bench. Product code: (VECL1025)



Optional Fruit Fly Lure available.

Area coverage:	15+ m <sup>2</sup>
Light source:	1 x 8 W UV-A lamp
Catch type:	Temperature Optimised glue board
Lamp life time:	9,000 hrs
Protection rating:	IP 20 (dust-proof)
Dimensions (LxWxD):	∅ 140 x 280 mm
Mounting position:	Wall or table-top mounted

## CONDOR 40 HT

Recommended for use in offices, non-food shops and non-food warehouses.

The unit is constructed in such a way that the UV-A light emission is 360 degrees around the unit. The CONDOR 40 HT has an all metal housing and uses a powerful UV-A lamp to lure insects into its trap. Product code: (VECL1006)



Area coverage:	40 m <sup>2</sup>
Light source:	1 x 22 W Phillips UV-A lamp
Catch type:	Short circuit proof high tension grid
Lamp life time:	9,000 hrs
Protection rating:	IP 21 (drip proof)
Dimensions (LxWxD):	370 x 370 x 140 mm
Mounting position:	Wall mounted, ceiling mounted or free standing

## BUZZARD

Recommended for use in shops and restaurants and dry industrial environments.

Wall mounting insect control unit suitable for trapping flying insects by means of 2 powerful UV-A lamps. Product code: (VECL2019)



Area coverage:	90+ m <sup>2</sup>
Light source:	2 x 15 W ASTRON UV-A lamps
Catch type:	Temperature Optimised glue board
Lamp life time:	9,000 hrs
Protection rating:	IP 20 (dust-proof)
Dimensions (LxWxD):	538 x 103 x 311 mm
Mounting position:	Wall mounted.

## MERLIN 45E

Recommended for use in homes, offices, shops and restaurants.

The unit can be mounted in multiple positions onto the wall or the ceiling or it can even be used free standing. The MERLIN 45E has a stainless steel front grid, with the housing made of durable ABS plastic and white powder coated steel. Product code: (VECL1003)



Area coverage:	45 m <sup>2</sup>
Light source:	1 x 15 W shatterproof ASTRON UV-A lamp
Catch type:	Temperature Optimised glue board
Lamp life time:	17,500 hrs
Protection rating:	IP 21 (drip proof)
Dimensions (LxWxD):	550 x 120 x 120 mm
Mounting position:	Wall, ceiling or cabinet mounted, or free standing

## MERLIN 100E

Recommended for use in shops and restaurants and dry industrial environments.

The unit can be mounted in multiple positions onto the wall or the ceiling. The MERLIN 100E has a stainless steel front grid, with the housing made of durable ABS plastic and white powder coated steel. Product code: (VECL1000)



Area coverage:	100 m <sup>2</sup>
Light source:	2 x 15 W shatterproof ASTRON UV-A lamps
Catch type:	Temperature Optimised glue board
Lamp life time:	17,500 hrs
Protection rating:	IP 21 (drip proof)
Dimensions (LxWxD):	570 x 220 x 160 mm
Mounting position:	Wall and ceiling mounted

## KINGFISHER

Recommended for use in shops and restaurants and wet industrial environments.

The hose proof IP 65 rated KINGFISHER can be mounted in multiple positions on the wall or the ceiling. Constructed with a stainless steel front grid, with the housing made of durable ABS plastic and white powder coated steel. Product code: (VECL1002)



Area coverage:	100 m <sup>2</sup>
Light source:	2 x 15 W shatterproof ASTRON UV-A lamps
Catch type:	Temperature Optimised glue board
Lamp life time:	17,500 hrs
Protection rating:	IP 65 (hose proof)
Dimensions (LxWxD):	570 x 220 x 160 mm
Mounting position:	Wall mounted or ceiling mounted

## PEREGRINE 3

Recommended for the toughest conditions and most severe fly problems in kitchens, food production areas, and more.

With its totally unique, world first design and fly trapping features, the PEREGRINE is easy to service, stylish and effective, featuring European design build standards and a diffuse light output. Product code: (VECL2017)



Area coverage:	120 m <sup>2</sup>
Light source:	3 x 15 W shatterproof ASTRON UV-A lamps
Catch type:	Temperature optimised glueboard
Lamp life time:	17,500 hrs
Protection rating:	IP 21 (drip-proof)
Dimensions (LxWxD):	470 x 325 x 100 mm
Mounting position:	Ceiling and wall mounted



# VECTOTHOR™

FLYING INSECT CONTROL LIGHT TRAPS

## ASTRON™ ECO-LED LAMPS

LIGHTING UP THE FUTURE FOR INSECT CONTROL



### VECTOTHOR DYNAMIC OSCILLATION PULSE TECHNOLOGY™

This unique technology is essential to provide fly trapping performance equal to, or better than, that provided by fluorescent lamp fly trap models.

A highly proprietary logarithm has been developed to cause fluctuations in the light beam that are imperceptible by people, but that greatly influence and improve fly catch rates.

Early in the development process of producing high-performance LED lamp, it became clear that since, unlike fluorescent lamp, LED lights produce

a constant flow of light; fly landing behaviour was negatively impacted by LED lights and, as a direct consequence, kill rates were reduced. This led to the development of our VECTOTHOR Dynamic Oscillation Pulse Technology™ to provide class leading fly killing performance.

**Environmentally Responsible:  
Use 50% less power than traditional models, with big savings in energy bills**



### TECHNICAL DATA 15 WATT ASTRON LED HF UV-A LAMP

The ASTRON 15 Watt LED UV lamp offers the same UV-A output as a traditional 15 Watt UV-A lamp, but does it with approx. 50% of the incoming power. This offers huge cost savings. And with a lifetime of over 3 years, the impact on the environment is significantly lower.

And of course, the lamp meets the strict quality controls of Ensysstex and meets all relevant standards.



<b>Technical name</b>	ASTRON LED 15 Watt LED HF UV lamp		
<b>Power consumption (W):</b>	8	<b>Shatterproof lamp sleeve:</b>	YES
<b>UV-A power (W):</b>	2.7	<b>RoHS compliant:</b>	YES
<b>Lifetime (hr):</b>	20,000	<b>EN 60335 2.59 compliant:</b>	YES
		<b>Wavelength emission:</b>	340 – 450 nm
		<b>Energy saving per lamp / year:</b>	61.33 kW at continuous usage

### RESIDENTIAL / PROFESSIONAL UNITS

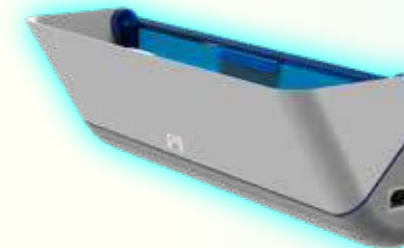


### VECTOTHOR OSPREY LED

2 x 15 W ASTRON LED lamps covers 100+ sq m.

#### TECHNICAL SPECIFICATIONS

<b>Catch specifications:</b>	Temperature optimised glueboard with silicone paper cover	<b>Guarantee:</b>	Two (2) years
<b>Weight:</b>	approx. 4 kg with light tubes fitted	<b>Dimensions (LxWxD):</b>	470 x 325 x 100 mm
<b>Material:</b>	Coated steel casing, cover/grid ABS plastic		



### VECTOTHOR FALCON LED

1 x 15 W lamps covers 60+ sq m.

#### TECHNICAL SPECIFICATIONS

<b>Area coverage:</b>	60+ m <sup>2</sup>	<b>Guarantee:</b>	Two (2) years
<b>Catch specifications:</b>	Temperature optimised glueboard with silicone paper cover	<b>Dimensions (LxWxD):</b>	700 x 180 x 150 mm
<b>Weight:</b>	approx. 4 kg with light tube fitted		
<b>Material:</b>	Powder coated metal		

THE RANGE THAT'S LIGHTING THE FUTURE OF FLY CONTROL, USING VECTOTHOR'S DYNAMIC OSCILLATION PULSE TECHNOLOGY™



### VECTOTHOR PEREGRINE<sup>3</sup> LED

3 x 15 W ASTRON LED lamps covers 150+ sq m.

#### TECHNICAL SPECIFICATIONS

<b>Catch specifications:</b>	Temperature optimised glueboard with silicone paper cover	<b>Guarantee:</b>	Two (2) years
<b>Weight:</b>	approx. 6 kg with light tubes fitted	<b>Dimensions (LxWxD):</b>	520 x 150 x 365 mm
<b>Material:</b>	Coated steel casing, cover/grid ABS plastic		



### VECTOTHOR BUZZARD LED

2 x 15 W lamps covers 100+ sq m.

### INDUSTRIAL / LARGE COMMERCIAL

<b>Catch specifications:</b>	Temperature optimised glueboard with silicone paper cover	<b>Guarantee:</b>	Two (2) years
<b>Weight:</b>	approx. 4 kg with light tubes fitted	<b>Dimensions (LxWxD):</b>	520 x 150 x 365 mm
<b>Material:</b>	Coated steel casing, cover/grid ABS plastic		



# INSECT BAIT STATIONS

Chemical free Professional Pest Management monitoring systems.



## HYMENOPTHOR ANT BAIT STATION



### Durable device for easy mounting

The unique slide mounting system makes the HYMENOPTHOR Ant Bait Station very easy to service, while user selectable insect entry points ensure versatility regardless of the station location. Moulded from food grade polypropylene, these rugged, reusable Stations come complete with a self adhesive strip for the 'slide-mount' backing plate or a zip tie option allowing for any required mounting situation. Product Code: (CHEHY1000)

## BLATTATHOR COCKROACH TRAP



### Attractive, disposable cardboard trap

Has a low profile making it easy to place in a variety of situations. Each BLATTATHOR Cockroach Trap is versatile and can be used as either a single large Trap, in areas of higher infestation, or it can be separated to form three small Monitor Traps, allowing you the opportunity to make more placements, which is particularly useful when monitoring to determine the effectiveness of your control program.

The attractants are incorporated into the glue, to better suit the requirements of HACCP. However, the release technology and attractants used ensures they keep attracting cockroaches and stored product insects for a good three months or more. The glue board will catch and retain nymphs and adults of all important cockroach pest species, including *Periplaneta* species. Product Code: (CHEBT1000)

## BLATTATHOR COCKROACH / INSECT MONITOR



### Heavy-duty Reuseable Monitor with Glueboard.

Designed for use in any position, even on its side, or upside down in a cupboard. Angled entry ramps ensure insects enter first time. This re-usable Monitor can be used again and again, in fact we recommend it. The glueboard will catch and retain nymphs and adults of all important cockroach pest species, including *Periplaneta* species. During routine services the glueboard is easily replaced.

When cockroaches gather they release pheromones which attract even more cockroaches. These natural aggregation pheromones account for a complex cocktail of more than 150 chemicals, so mimicking this effect is almost impossible. Research shows that cockroach deposits are the main repository for the pheromones and they continue to be attractive for a year or more.

The **BLATTATHOR Insect Monitor** ensures that by replacing only the glue board these very effective, natural aggregation pheromones remain, so you have the dual action of a powerful lure combined with the additional attractiveness of natural pheromones.

Product Code: (CHEBI1000)

# VECTOTHOR™ VINEGAR FLY TRAP

## THE ULTIMATE VINEGAR FLY TRAP



Targets Vinegar Flies, *Drosophila melanogaster* Meigen.

## VECTOTHOR VINEGAR FLY TRAP KEY FEATURES

- ✓ **No maintenance or monitoring;** Simply peel back the protective paper and start trapping. Food-grade lure solution shown to attract 2.2 times more vinegar flies than other vinegar fly traps.
- ✓ **Clear design - you'll know when it's working!;** The traps are clear so you can see the vinegar flies are being trapped. Lure solution remains effective for 30 days. Dispose of in regular household waste and replace with fresh trap.
- ✓ **"No spill" conical trap design;** The patented design prevents the solution from escaping from the trap if dropped or tipped upside down! Adhesive backed holder (sold separately) allows you to trap vinegar flies anywhere! Underneath kitchen counters, sinks, tables, etc. Conical trap design lures in vinegar flies but will not let them escape.
- ✓ **Optional VECTOTHOR Vinegar Fly Trap Bracket;** Perfect for placing anywhere around kitchen or garbage areas for constant vinegar fly protection. Allows you to hang trap upside down, sideways or secure placement on counters, sinks etc.

## VECTOTHOR VINEGAR FLY TRAP PRODUCT DETAILS

- Active Ingredient:** Non-toxic trap for vinegar flies.
- Formulation Type:** Ready to use lure, trap and kill design
- Pests Controlled:** Vinegar flies
- Pack Size/ Code:** 20 mL (VECB1002)

## PERFORMANCE

VECTOTHOR VINEGAR FLY TRAP outperformed a range of other traps in independent University trials. Trap provides continuous vinegar fly protection. The "food grade", non-toxic lure solution draws the fruit flies into the see-through traps where they are unable to escape. The patented, conical trap design also prevents the lure solution from spilling out from the traps, if it is dropped or knocked off a counter. Each trap lasts for 30 days with almost no monitoring or maintenance. Once the 30 days are up, simply dispose of the traps in the trash and replace with a new trap.



# DUAL POWERLIGHT

## RECHARGEABLE DUAL FLASHLIGHT - UV-A / WHITE LIGHT

The most powerful flashlight available for the pest control industry offering white light and UV-A light.

The powerful white light is ideal for all your professional inspection needs, whilst the second UV-A light is perfect for scorpions, rodent inspections, to reveal urine stains, and bed bug treatments to reveal the presence of eggs.

This torch is as rugged as they come, protected against water immersion to 1 m, drops from 1.5 m, scratch-proof, temperature-resistant to 100 degrees Celsius and manufactured to ISO9001 - this is a torch for professionals.

Contents:

### DUAL POWERLIGHT

- Li-ion rechargeable battery
- Multi-charger for mains or in-car charging
- Belt holster



### Specification

<b>Light Source</b>	5 W white Cree LED XPG2 + 5 W UV-A LED
<b>Battery</b>	18650 Li-ion rechargeable battery
<b>Specs</b>	Rated for 20,000 hours (5 years)
<b>Brightness</b>	300 lumens
<b>Working time</b>	5 - 6 hours
<b>Night Reflector</b>	Green Strip lights up in the dark
<b>Weight</b>	184 g
<b>Colour</b>	Black
<b>IP Rating</b>	IPX8 - Protected against water submersion
<b>Body</b>	Aluminum T6061, Premium Type III hard-anodized abrasive finish; scratch-proof.
<b>Electrical supply charger</b>	110-240 V / 50-60 Hz
<b>Dimensions</b>	150 x 35 mm (L x D)

# ACCUTHOR GEL GUN

## HIGH PERFORMANCE, ADJUSTABLE, STAINLESS STEEL GEL GUN

The uniquely designed ACCUTHOR Gel Gun sucks the gel out of your gel tubes, ensuring a more accurate distribution and NO dripping.

The ACCUTHOR Gel Gun is fully adjustable so you can control the amount of product dispensed, and it comes complete with a range of different tip sizes to give you total control over droplet sizes. It is a rugged design, constructed from stainless steel to give you many years of accurate use when used with 30 g or 35 g classic professional gel tubes, 5 positions for accurate dosage are available to give you just the right amount of gel for the treatment, ensuring the most precise and cost-effective placement.

Product Code: (EQPA1000)



### ACCUTHOR DUSTERS

#### ACCUTHOR™ PRECISION APPLICATOR

The ACCUTHOR Precision Applicator is designed for use with MAGNATHOR Magnetic Insecticide to lightly apply the MAGNATHOR Magnetic Insecticide into the smallest cracks and crevices. A range of optional accessories are also available including a belt pouch, and an extension tube with nozzle.

Product Code: (EQPA2000)



#### ACCUTHOR™ BULB DUSTER

The ACCUTHOR Bulb Duster is a large rugged hand duster ideal for your day to day application of dust products. Can even be used upside down!

Product Code: (EQPD1003)



#### ACCUTHOR™ GRANULE APPLICATOR

The ACCUTHOR Granule Duster is just perfect for applying HYMENOPTHOR Granular Ant Bait.

Product Code: (EQPD1001)





# BIRCHMEIER®

## BIRCHMEIER APPLICATION EQUIPMENT

Ensystex is the exclusive agent for Birchmeier in Australia.

Since 1876 Birchmeier has been manufacturing high quality sprayers, foamers and dispensers for professionals. Innovative, functional and durable quality for demanding users.

Made in Switzerland we have a common commitment to deliver quality and reliability.

We guarantee the supply of spare parts for up to 10 years, so our customers are sure to benefit long-term from the quality of Ensystex Birchmeier products. Comprehensive range of spare parts and accessories for optimum operation and maximum service life.

And our Accu-Power Range offers quiet power and zero emissions, and there is no need to carry fuel in your vehicle any more! The latest Lithium Ion Battery Technology gives you unmatched power output, long running times, and quick recharging. And all of them are made with a smart pressure control.

### Spraying



#### Iris 15

Professional backpack sprayer with externally mounted piston pump, robust in every detail (6 bar)



#### Spray-Matic 5 S

Stainless steel compression sprayer with powerful brass pump and large separate filling opening (6 bar)



#### RPD 15 ATS

The backpack sprayer - easy, handy, redefined ergonomics with foldable non-drip pump



#### Profi Star 5

Professional compression sprayer for general use with Viton seals (4 bar)



#### Flox 10 AT3

When the best gets even better, with an ergonomically shaped tank, padded S-shaped carrying belt with click system and a new pump lever system

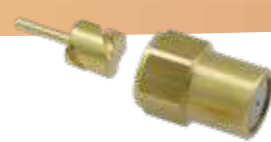


Additional accessories and spare parts available

The nozzle plays a key role. Using the right nozzle saves spray solution, time and makes treatments more effective



Adjustable nozzle



Duro mist nozzle 0.8 mm - 1.65 mm



Fanjet nozzle

### Foaming

#### Foam-Matic 5 P

Mobile and high performance top compression foam - 5 L sprayer (4 bar)



#### Foam-Matic 1.25 P

Mobile foaming with excellent foam quality - 1.25 L



### Dusting

#### DR 5

Professional powder duster with compressed air connector (3 bar)



### Fuelling

#### Super Star 1.25 / 360°

The small, handy compression sprayer with swing 360 (degree symbol), adjustable brass nozzle and transparent plastic 1.25 L tank with protected safety & relief valve



### Spreading

#### Granomax 5

Fertiliser- and salt spreader with dosage control



#### XL 8

The ultimate 7 m extension lance for dusting and spraying



### Accessories

Extension tube 26 cm bendable for Super Star 1.25

Mini-Flex: The flexible extension for dusting and spraying



Made in Switzerland



## The zero emission and quiet «Accu-Power» line for professionals

For every application the suitable battery sprayer. All are made with a smart pressure control.



All backpack sprayers

- 15 L
- 1 – 4.5 bar
- 0.3 – 1.3 L / min<sup>1</sup>
- 14.4 V / 2.25 Ah



REB 15

- 15 L
- 0.5 – 6 bar
- 0.3 – 1.5 L / min<sup>1</sup>
- 18 V / 3 Ah



REC 15

- 15 L
- 1 – 10 bar
- 1.0 – 2.8 L / min<sup>1</sup>
- 25.2 V / 8.7 Ah



REX 15

- 15 L
- 1 - 3 bar
- 10 h / 190 L
- 14.4 V / 2.25 Ah



REA 15

- 50 L mobile, quick-change battery (1-10 bar)
- 1.2 – 3.3 L / min<sup>1</sup>
- 25.2 V / 8.7 Ah



Accu-Power A50

- Mobile 75 / 130 L battery power (1-10 bar)



Accu-Power A75 and A130

Traditional Birchmeier quality with robust, high-end performance and with a wide range of accessories

### Real work comfort

- Zero emission
- Quiet and less vibrations
- Comfortable engine starting (no starter)
- Low operating costs (no use of petrol)
- No petrol storage necessary
- Optimum comfort due to ergonomic design (backpack sprayers)

### Electronic control

- Intelligent pressure control
- Operating pressure adjustable (continuously)
- Energy efficient
- Protective setup for pump and rechargeable battery
- Up to 3.5 hours of operation
- 25.2 V / 9.8 Ah Li-ion battery
- Adjustable airspeeds up to 65 m/s
- Up to 13 metres in range
- Low noise emission
- High energy efficiency

### AS 1200 – Battery spray blower

#### Spraying with even greater efficiency

#### Air-supported spraying with «Accu-Power»

The new technology from Birchmeier. A new dimension to plant protection: Spraying with pressure-controlled liquid supply in an air stream. A large spraying range can be achieved with pre-spraying and a variable air stream. A minimum loss of spray solution and a long reach is the result.



**NEW:**  
Air-supported  
spraying  
technology

**ACCUPOWER**

<sup>1</sup>Performance characteristics min / max with fittings of delivery  
<sup>2</sup>Performance characteristics min / max without fittings

## BM 1035 «Accu-Power» pump station for all kinds of uses

Accu-Power BM 1035 Pump Station including battery and charger. Replaces the motorised pump on your vehicle. No petrol required.

The powerful BM 1035 with Li-Ion battery is easy and simple to use with its suction hose that can be connected to virtually any tank system. A zero-emission and quiet power unit with a maximum flow rate of 5.5 litres per minute and an adjustable operating pressure level up to 10 bar. The proven electronic pressure control with an integrated and hydraulic built-in agitator allows ultimate comfort.



### Unique Birchmeier features

- Intelligent pressure control
- Continuously adjustable operating pressure
- Energy efficient due to electronic control
- Protective setup for pump and battery



### Performance characteristic

- Maximum flow rate 5.5 L / min
- Pressure range of 1 – 10 bar
- Li-Ion battery capacity with 220 Wh
- Battery performance up to 14.5 h / 1300 L
- Battery charging time less than 2.5 hrs





The background of the advertisement is a dark blue, futuristic scene. It features a glowing globe of the Earth in the center, with a cityscape of skyscrapers visible behind it. Several bright, jagged lightning bolts strike across the scene, adding a sense of power and technology. The overall aesthetic is high-tech and global.

# ENSYSTEX™

LEADING INNOVATION IN PEST MANAGEMENT

**ENSYSTEX AUSTRALIA**

**Call 13 35 36**

[www.ensystex.com.au](http://www.ensystex.com.au)

[info@ensystex.com.au](mailto:info@ensystex.com.au)

**ENSYSTEX NEW ZEALAND**

**Call 0800 ENSYSTEX**

**(0800 367 978)**

[www.ensystex.com.au](http://www.ensystex.com.au)

[info@ensystex.com.au](mailto:info@ensystex.com.au)

BROA3000 3.04 04.19

™ Trademarks of Ensystemx Inc. used under licence by Ensystemx Australasia Pty Ltd